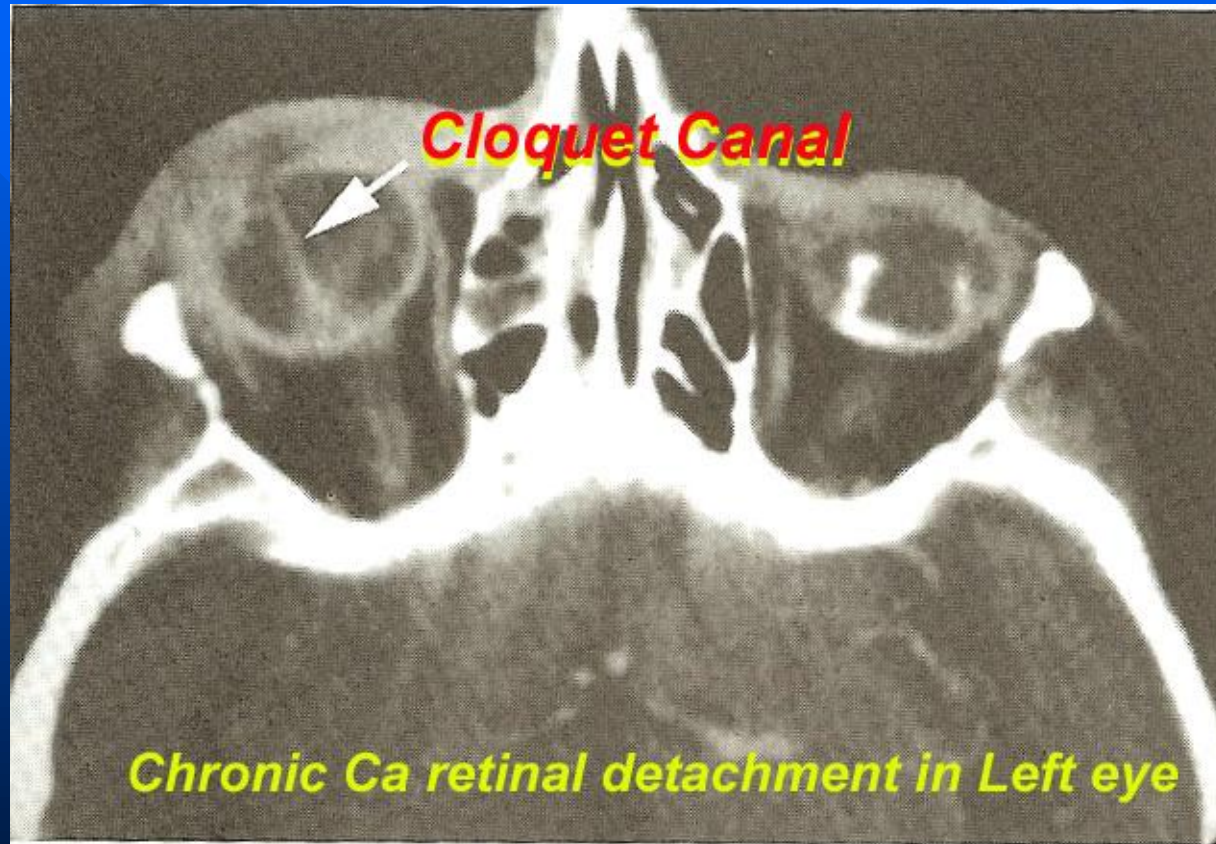


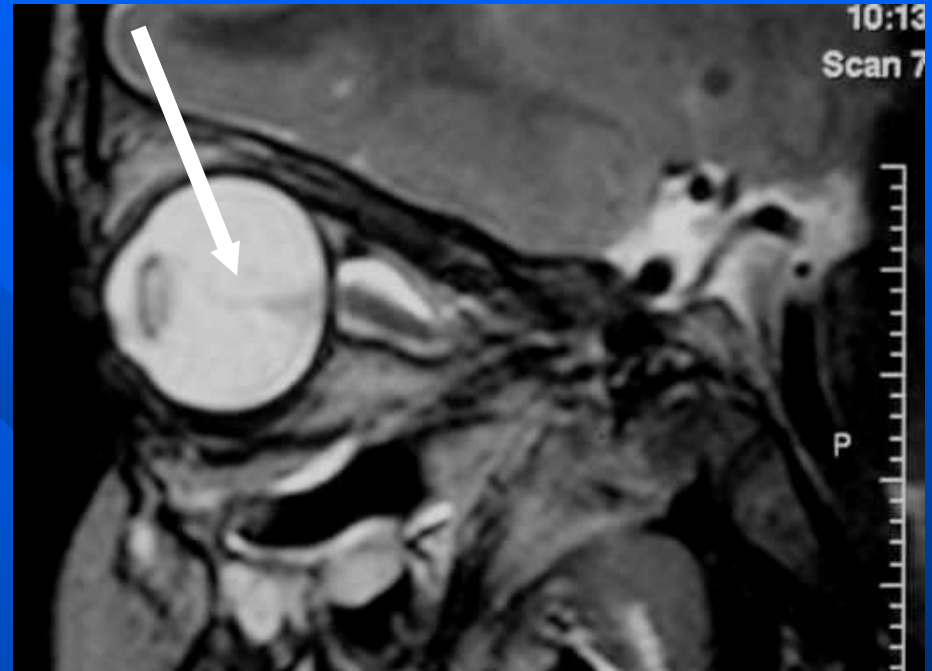
# Persistent Hyperplastic Primary Vitreous

- Hyperplasia of embryonic connective tissue
- Typically has microphthalmia
  - Rare in RB
- Vascular and prone to bleeding
- **Cloquet Canal – S shaped mass** which runs from the back of lens and the optic nerve, **makes the diagnosis. CT**
  - Increased density in globe
  - Enhancement of intravitreal tissue
  - **No Calcification**

# Persistent Hyperplastic Primary Vitreous



# Persistent Hyperplastic Primary Vitreous



Note that the intensity of the lens on the right side is markedly increased due to cataract formation compared to the left side