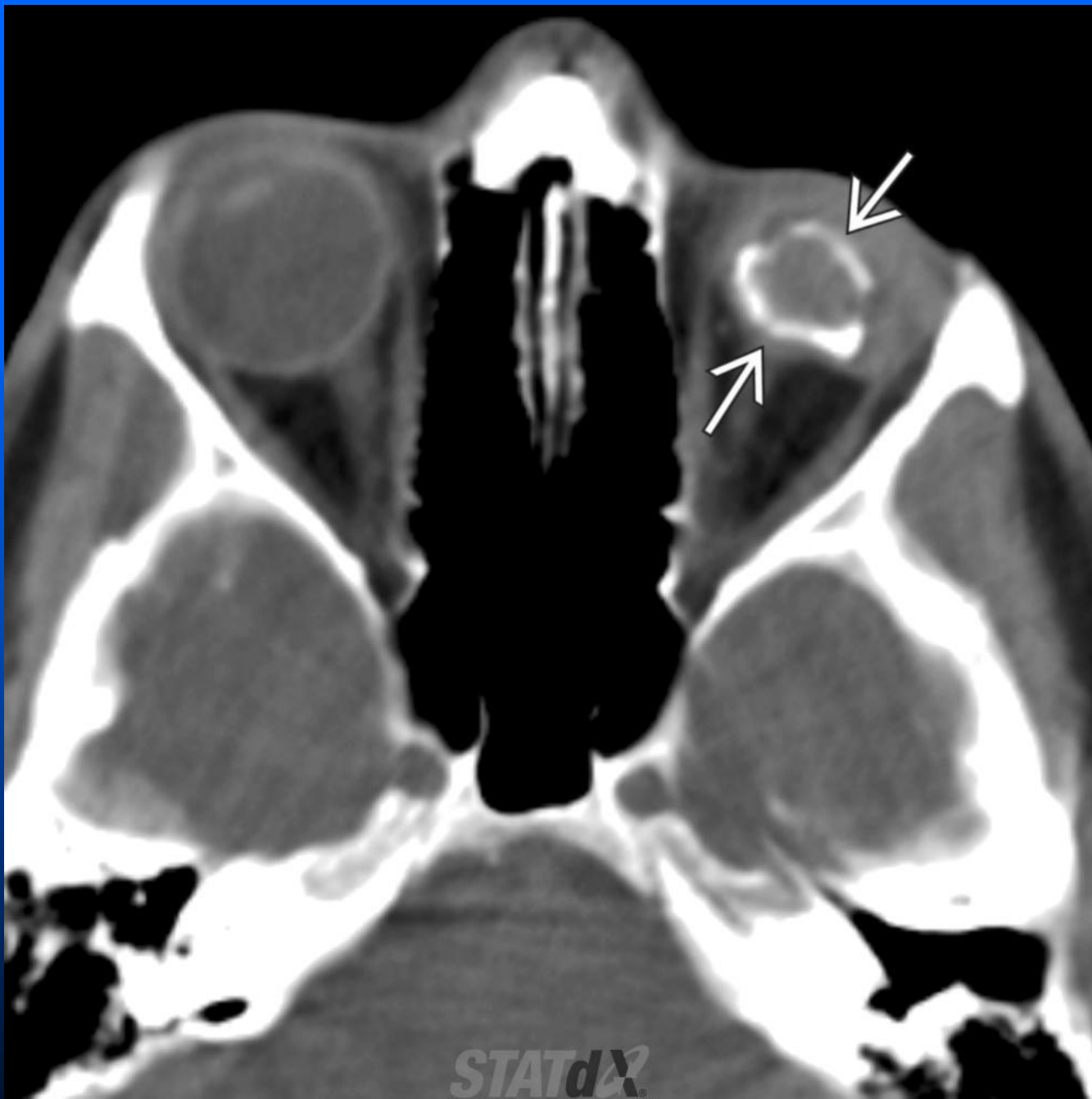


Phthisis Bulbi

- Key facts: End-stage condition of eye
 - Potential causes include trauma, infection, inflammation, chronic retinal detachment, and radiation
 - Pediatric causes include microphthalmia, retinopathy of prematurity, and Coats disease
 - Enucleation and prosthesis may be indicated for pain or cosmesis
- Imaging: Shrunk crenated globe
 - Irregular coarse nodular calcification
 - Optic nerve atrophy common



Axial NECT shows a small crenated left globe with irregular coarse peripheral calcification (white solid arrow).