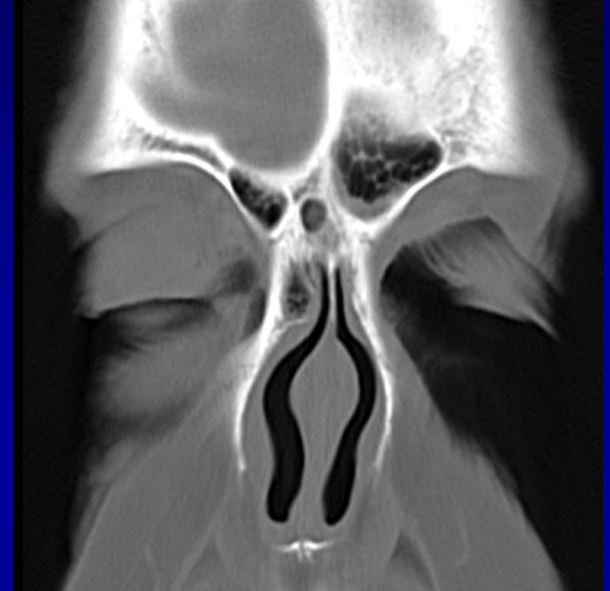


# Infection – Acute Sinusitis

- No indications for imaging common cold, or subsequent non-complicated sinusitis
- Secondary bacterial sinusitis
  - *Strep. pneum*, *H. flu*, *beta-hemolytic strep*
- Facial pain, fever, discharge
- Clinical diagnosis.
- Poor correlation symptoms & CT findings

# Acute Sinusitis – CT/MR

- Ethmoids often primary source
- Asymmetric
- Mucosal thickening
  - Moderate or severe
  - Non-specific
  - Thickened enhancing mucosa with submucosal edema
- Air/fluid levels
  - Frontal = sinusitis
  - Maxillary = sinusitis in correct setting
  - Ethmoid – rare
  - Sphenoid - nonspecific



# Acute Sinusitis – CT/MR

- Ethmoids often primary source
- Asymmetric
- Mucosal thickening
  - Moderate or severe
  - Non-specific
  - Thickened enhancing mucosa with submucosal edema
- Air/fluid levels
  - Frontal = sinusitis
  - Maxillary - sinusitis in correct setting
  - Ethmoid – rare
  - Sphenoid - nonspecific

