

# Allergic fungal sinusitis

- Severe form of chronic rhinosinusitis (CRS) with polyposis
- Allergic response to fungi characterized by eosinophilic mucin with noninvasive fungal hyphae

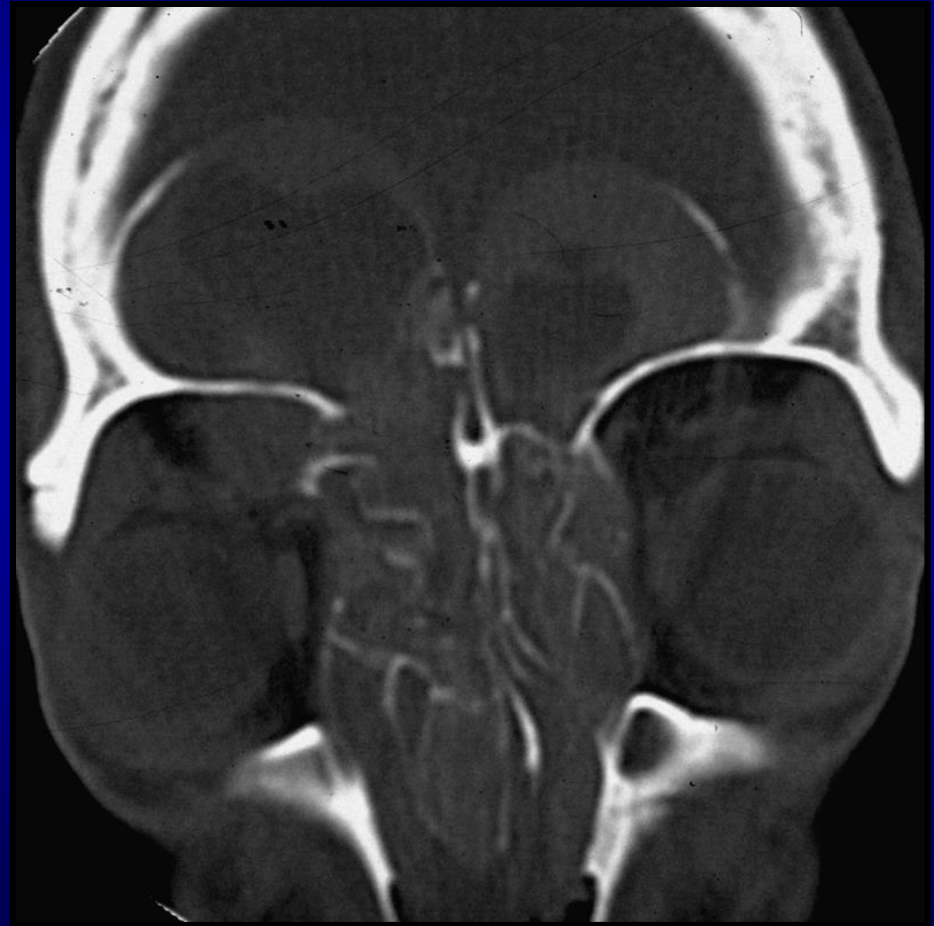


# Imaging

- Opacification and expansion of multiple sinuses with inspissated material
- Centrally hyperdense and peripherally hypodense on CT
- Expansion of sinus with bony remodeling and erosion
- Hypointense on T2 MR; may mimic air

# Allergic fungal sinusitis with polyps (AFS-SNP)

- Immune-competent
- Chronic nasal obstruction, “recurrent sinusitis”
- Cycle of sinusitis, mucosal edema, polyp formation, ostial stenosis, sinusitis...
- Polyps



# Allergic fungal sinusitis with polyps (AFS-SNP)

- CT

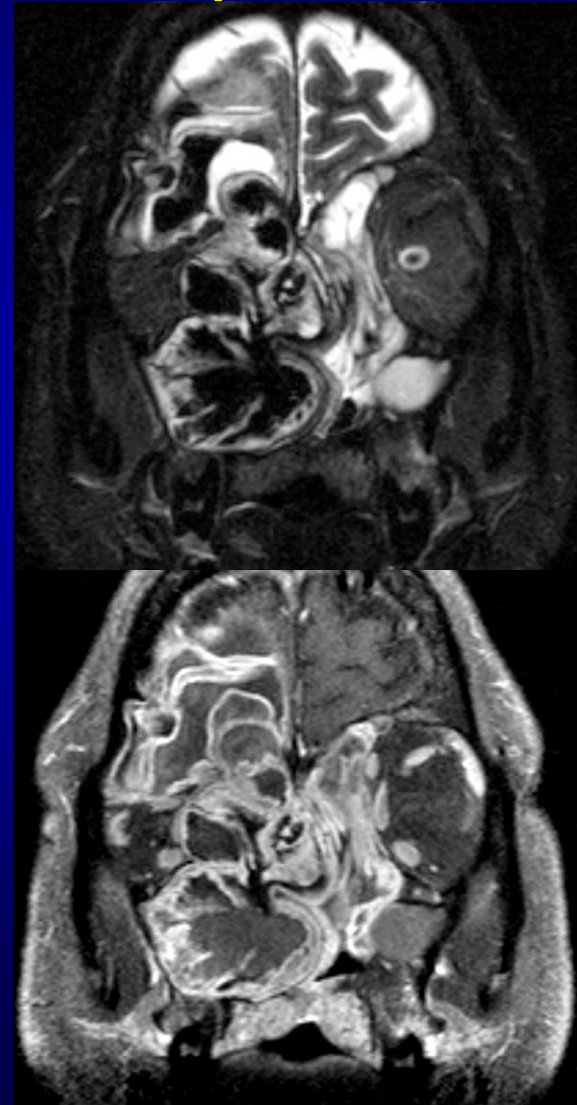
- Pansinus/nasal cavity opacification
- Expanded airless sinuses
- Thin deossified sinus walls
- Sinus contents variable in density
- Mixed low and high density on noncontrast CT



# Allergic fungal sinusitis with polyps (AFS-SNP)

- MRI

- Extremely complex SI
- May be  $\uparrow$  or  $\downarrow$  on T1
- Variable on T2, regions of frank signal void
- Marked expansion may encroach on surrounding structures, including orbit & skull base



# Allergic Rhinosinusitis

- “Seasonal pollinosis”
  - Hypertrophic polypoid redundant mucosa
  - No mass effect
- DDx: Sinonasal Polyposis