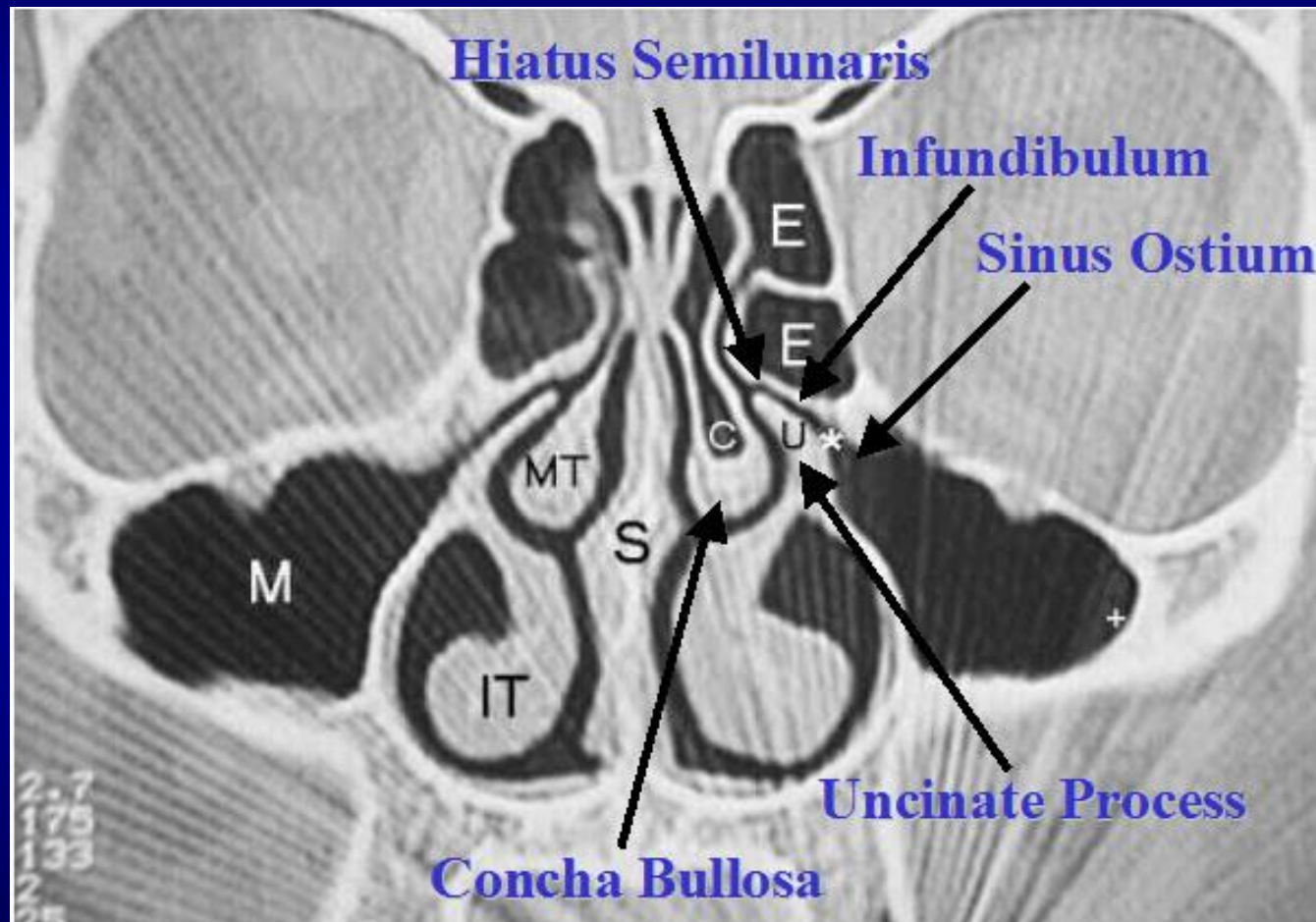
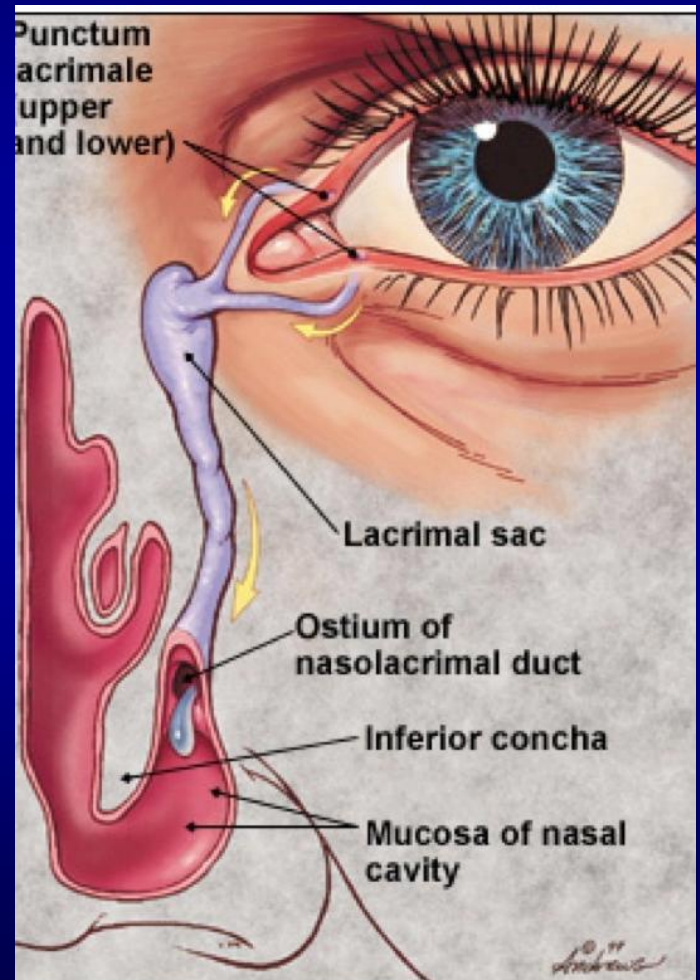
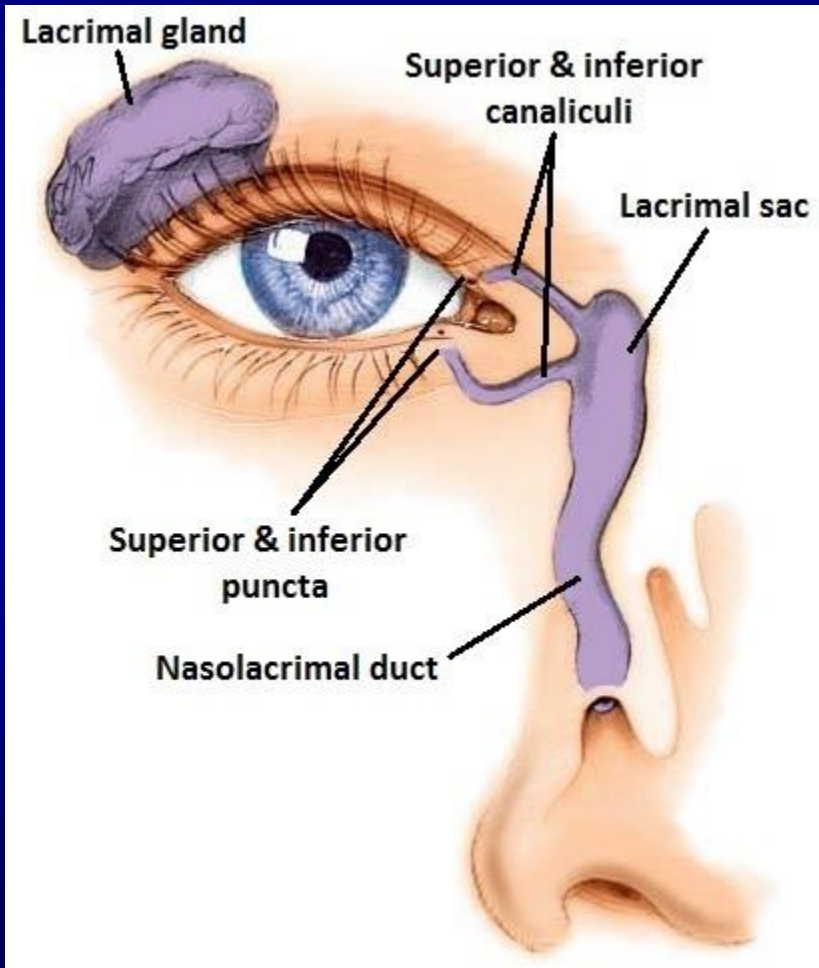
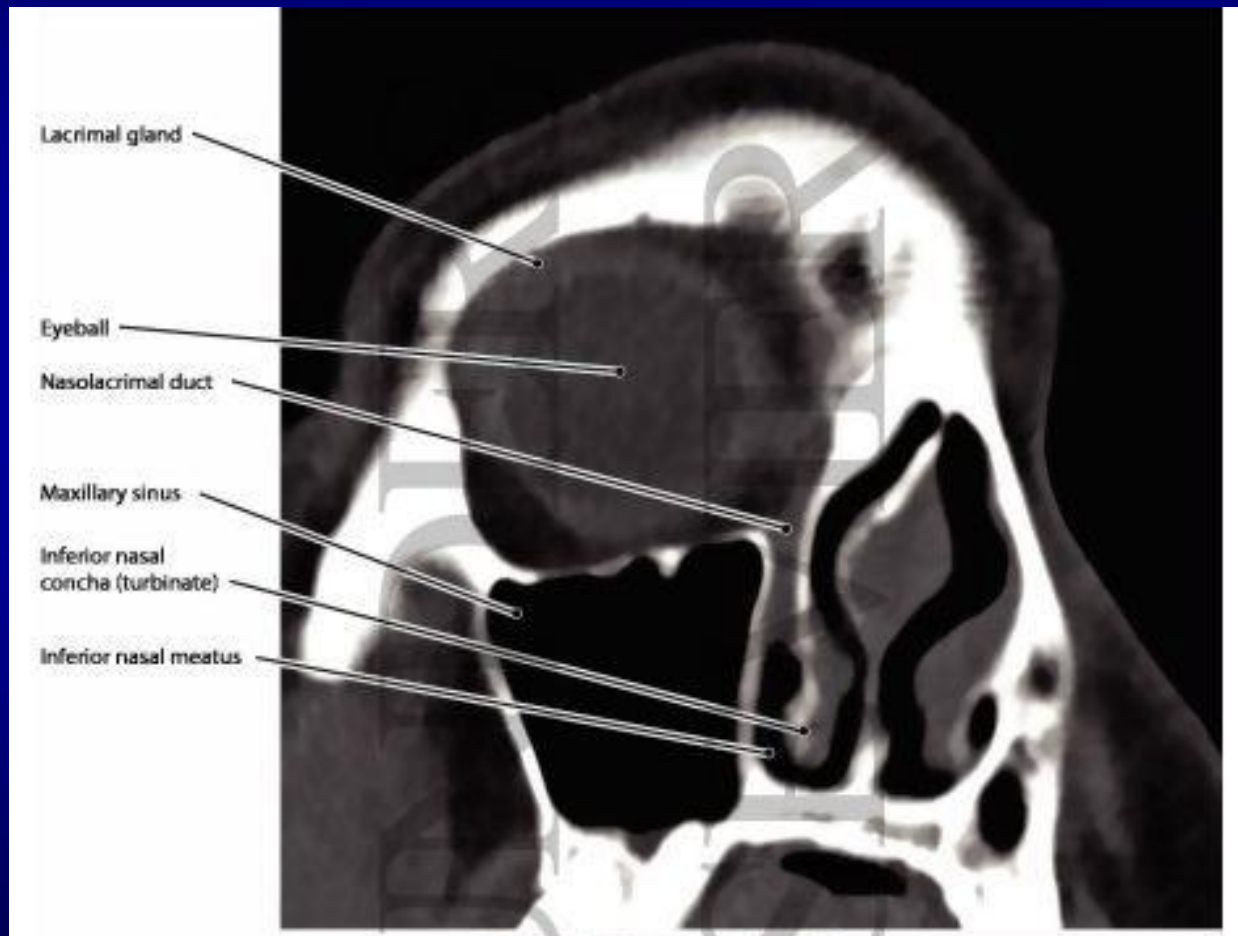
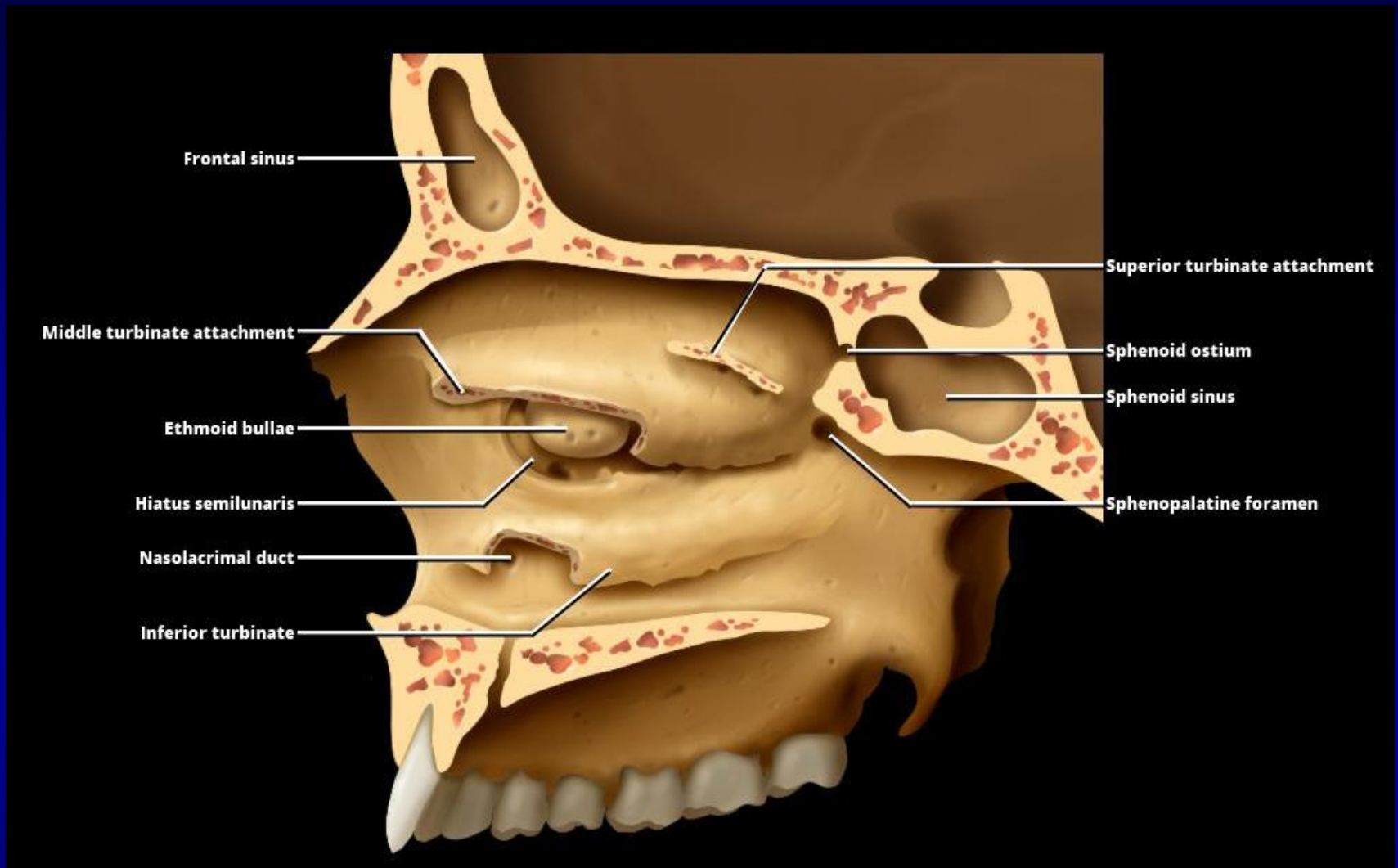


Anatomy





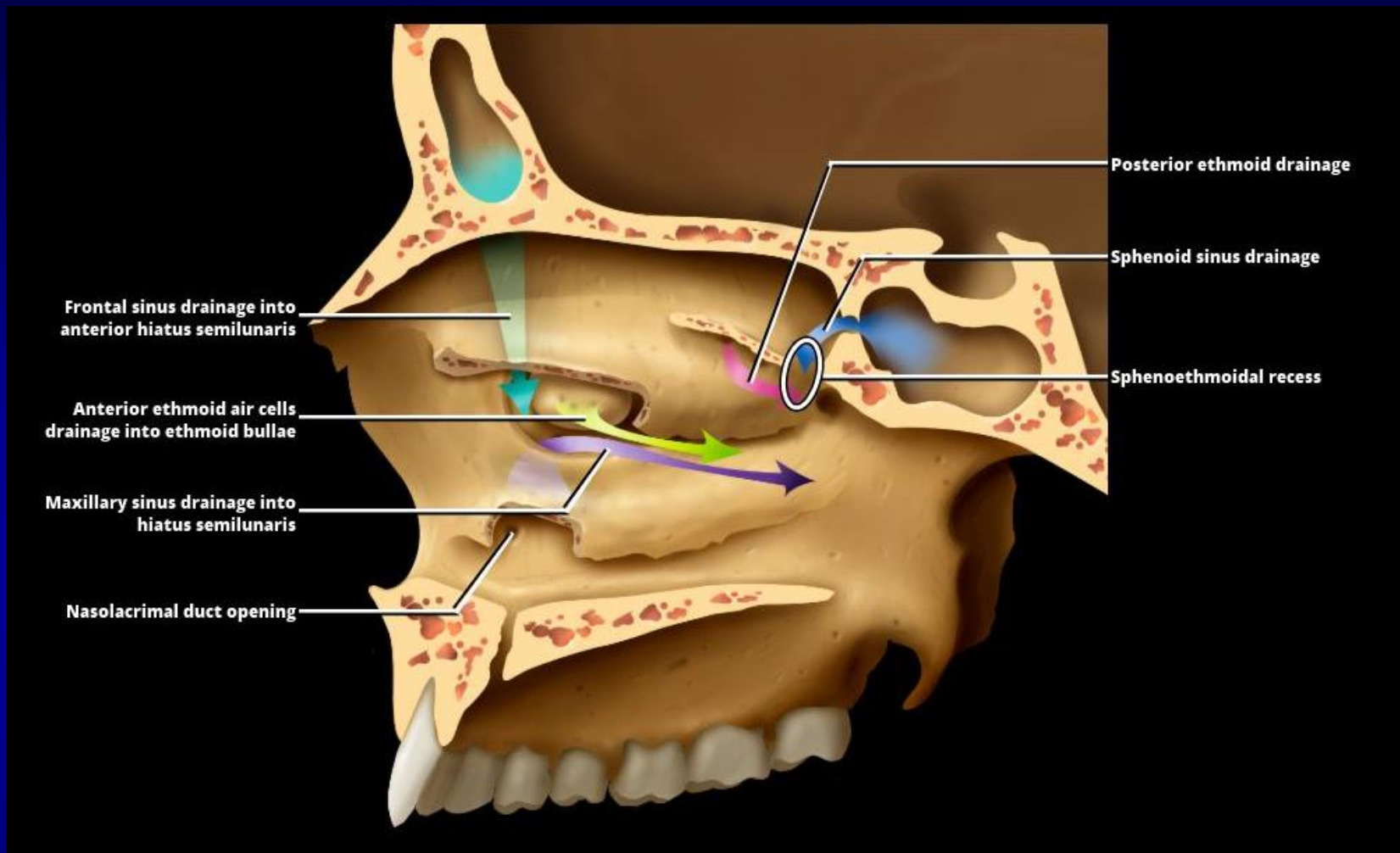




The superior and middle turbinates have been resected.

The ethmoid bullae and hiatus semilunaris are seen below the middle turbinate attachment.

The inferior turbinate has been partially resected to reveal the nasolacrimal duct, which empties into the anterior aspect of the inferior meatus.



- *The sphenoid and posterior ethmoid sinuses drain into the sphenoethmoidal recess in the posterior nasal cavity.*
- *The maxillary sinus drains via the maxillary infundibulum while the anterior ethmoids mostly drain through the ethmoid bullae into the ostiomeatal complex/middle meatus.*
- *The frontal sinus drains into the anterior middle meatus through the nasofrontal drainage system.*