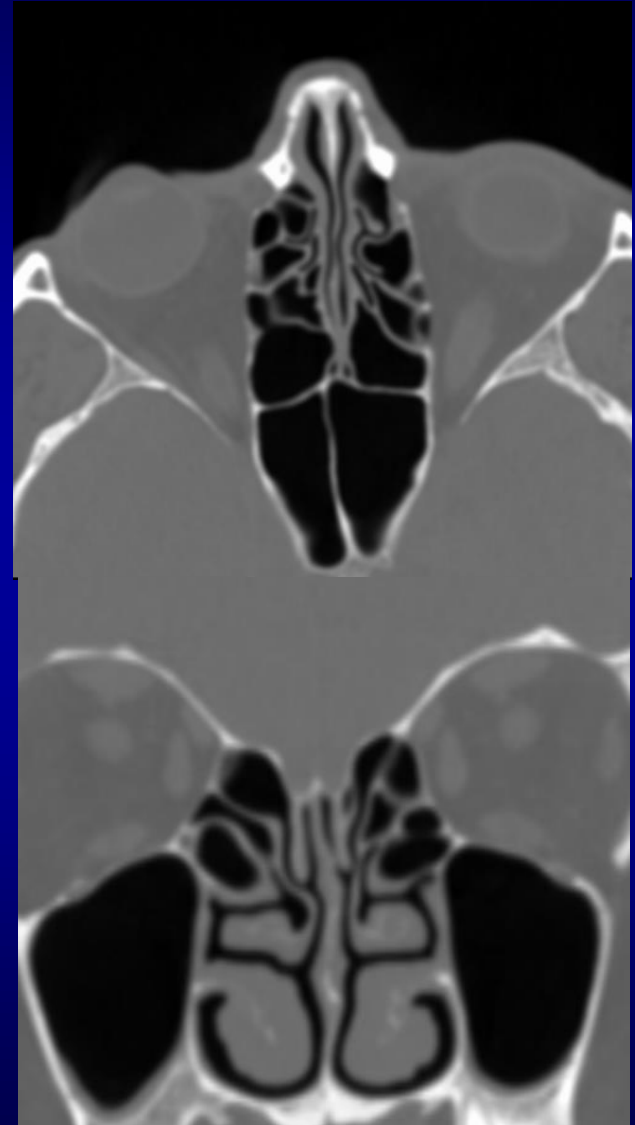


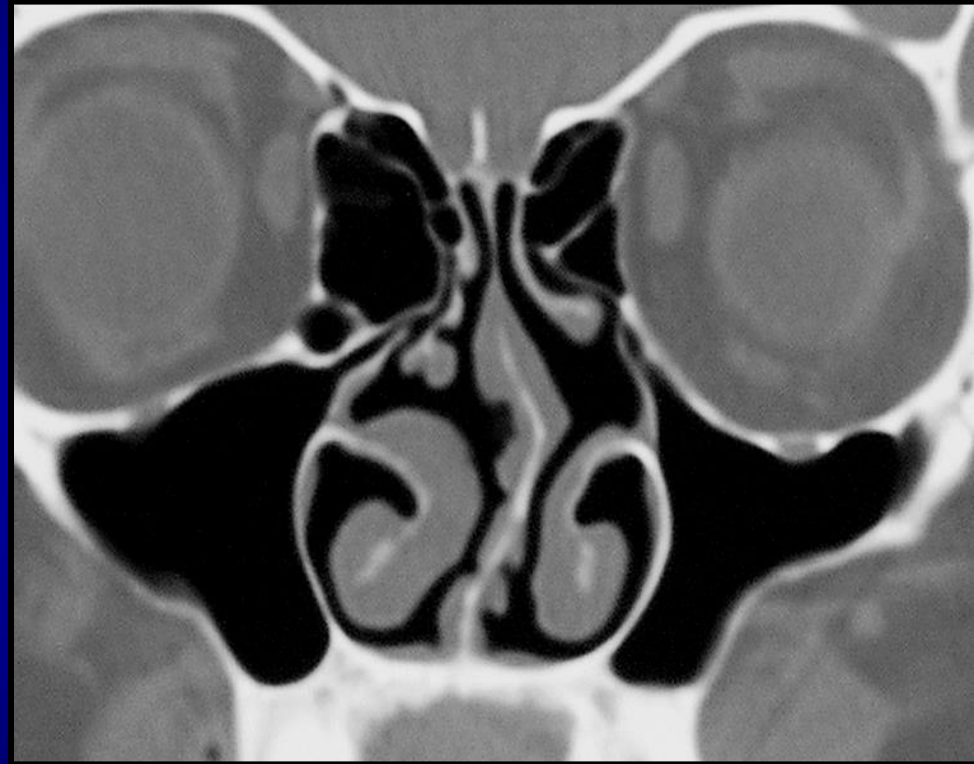
# Ethmoid sinus

- Bilateral
- Groups of cells formed by septa and lamella
- Anterior ethmoids
  - Multiple small cells
  - Middle turbinate
- Posterior ethmoids
  - Fewer but larger cells
- Basal lamella
  - Lateral insertion of middle turbinate
  - Separates ant from post ethmoids



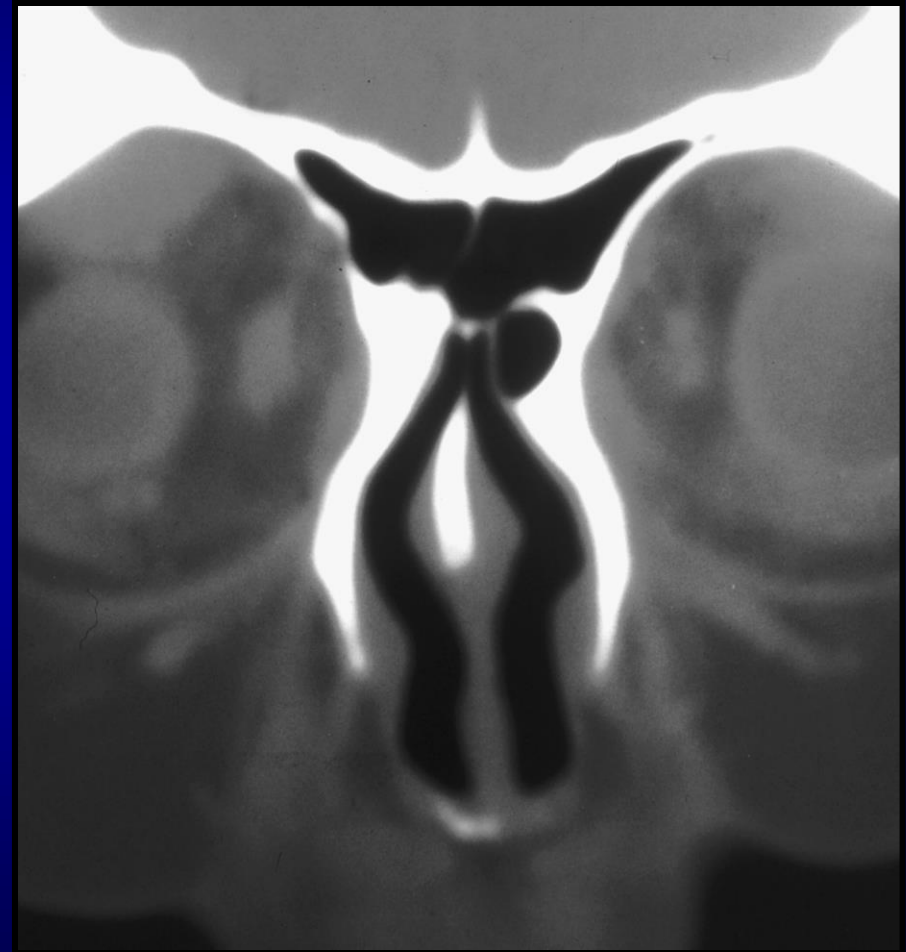
# Ethmoid sinus - anatomy

- Lamina papyracea
- Roof of the ethmoids
  - Lamella, thin
  - Roof, thicker bone
- Drainage, lateral to uncinate process
- Ethmoid bulla
- Every cell has its own drainage route



# Ethmoid sinus - variants

- **Agger nasi cell**
  - Most ant. ethmoid cell
- Supraorbital air cell
  - Needs to be differentiated from frontal sinus
- Haller cell
  - May obstruct max. sinus outflow
- Onodi cell
  - Close to optic nerve



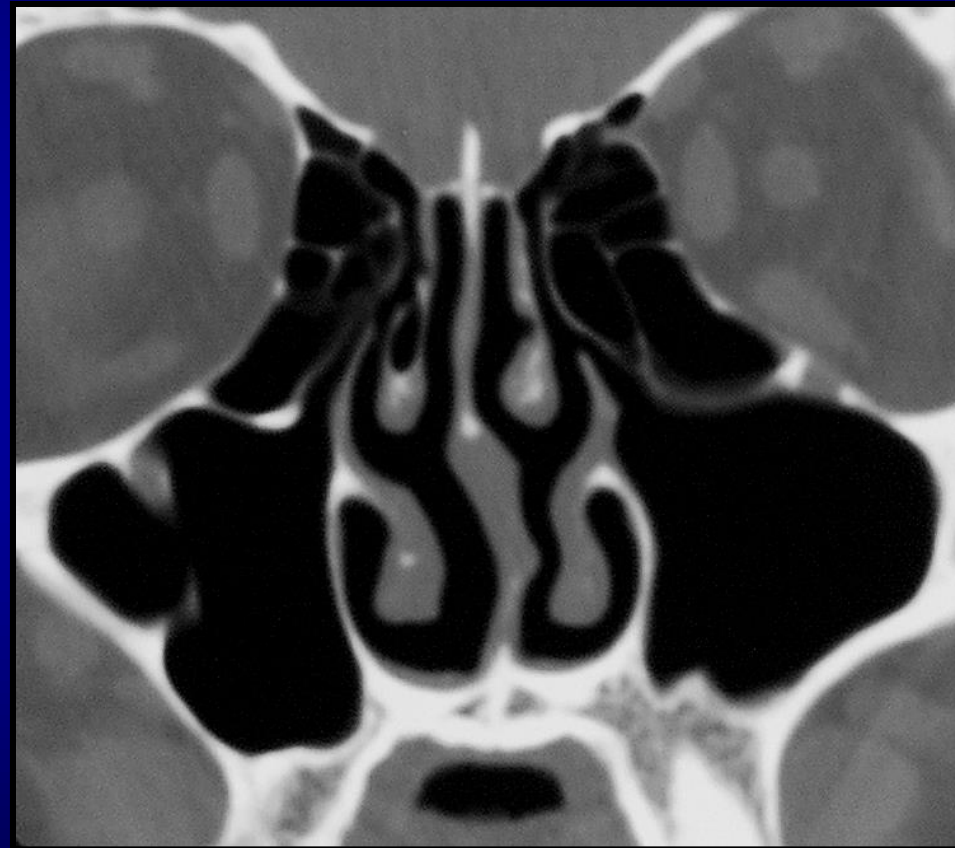
# Ethmoid sinus - variants

- Agger nasi cell
  - Most ant. ethmoid cell
- **Supraorbital air cell**
  - Needs to be differentiated from frontal sinus
- **Haller cell**
  - **May obstruct max. sinus outflow**
- Onodi cell
  - Close to optic nerve



# Ethmoid sinus - variants

- Agger nasi cell
  - Most ant. ethmoid cell
- Supraorbital air cell
  - Needs to be differentiated from frontal sinus
- **Haller cell**
  - **May obstruct max. sinus outflow**
- Onodi cell
  - Close to optic nerve



# Ethmoid sinus - variants

- Agger nasi cell
  - Most ant. ethmoid cell
- Supraorbital air cell
  - Needs to be differentiated from frontal sinus
- Haller cell
  - May obstruct max. sinus outflow
- Onodi cell or pneumatized ant. clinoid
  - Close to optic nerve

