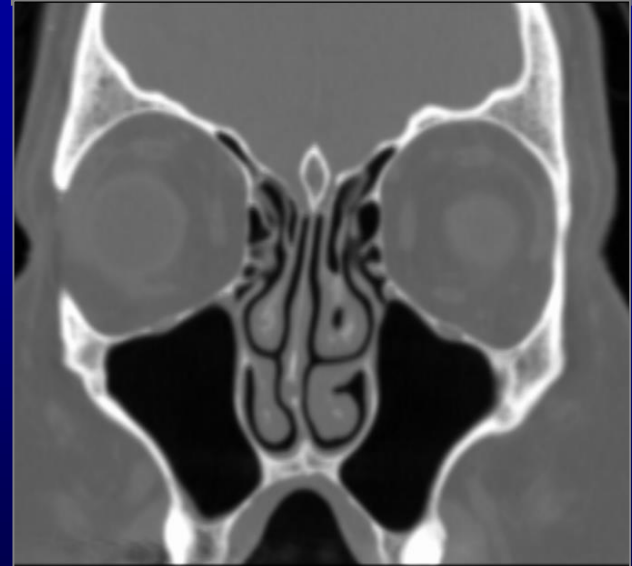
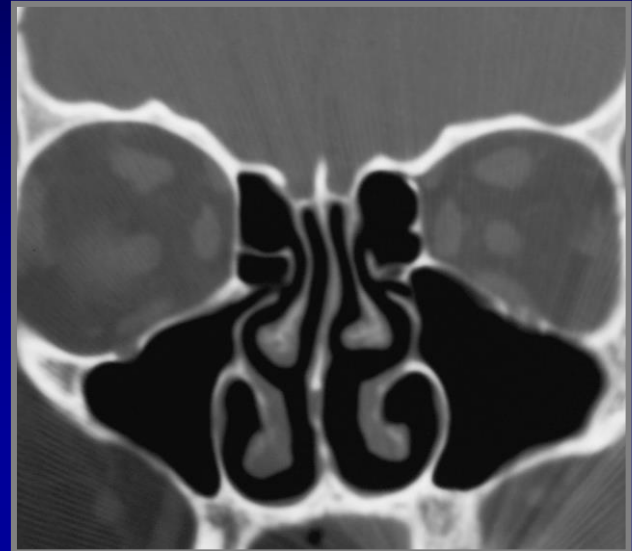


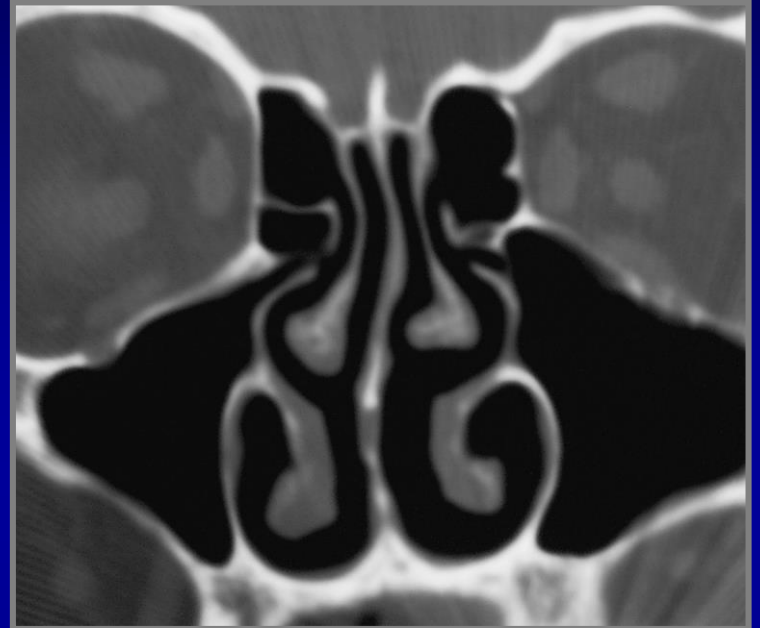
Maxillary sinus

- First to form in utero
- Rudimentary at birth, final form during 2nd decade
- Ostium - superomedial
- Recesses
 - Zygomatic
 - Alveolar
 - Palatine



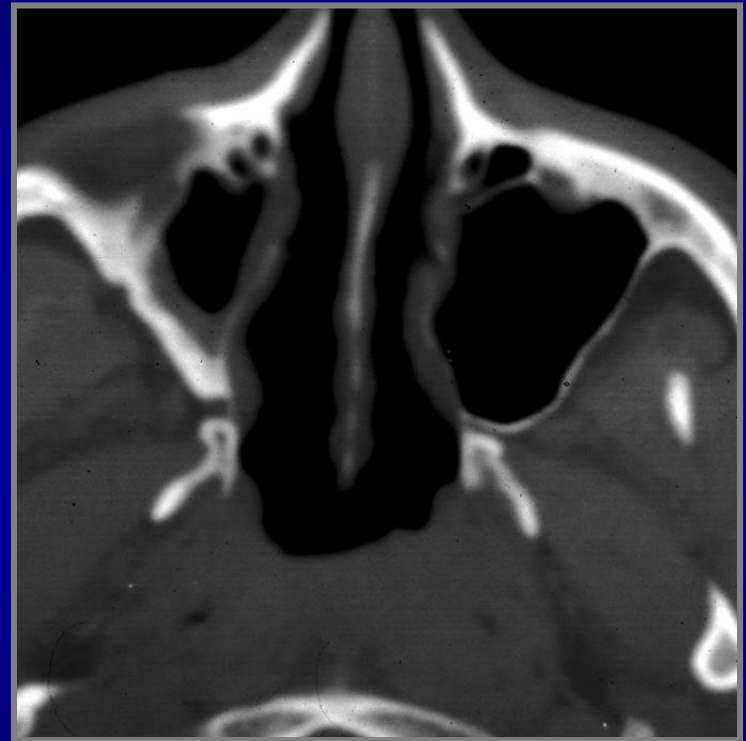
Maxillary sinus

- Drainage
 - Ostium is on superomedial portion
 - Drains into ethmoid infun/mid meatus
- Uncinate process
 - Medial wall of ostium
 - Located at insertion of inferior turb on lateral nasal wall
 - Contiguous with lacrimal bone anteriorly



Maxillary sinus - variants

- Hypoplasia
- Sclerotic walls – chronic inflammation
- Atelectatic – chronic inflammation
- Lateralized medial wall



Maxillary sinus – variants

Silent Sinus Syndrome

- Severely atelectatic maxillary sinus
- May be clear or opacified
- Superior wall of maxillary sinus is floor of orbit
- Therefore: may present with enophthalmos

