

Onodi air cell

- **Sphenoethmoidal air cell**, also commonly known as the **Onodi air cell**, is an anatomical variant of the paranasal sinuses, important due to its close proximity to the optic nerve and internal carotid artery.
- Extends posteriorly to lie superolateral to the sphenoid sinus and thus in close proximity to the optic nerve and internal carotid artery .
- Often extends into the anterior clinoid process;
- Importantly, aeration of the anterior clinoid process does not imply presence of an Onodi cell, as frequently such aeration is due to recesses of the sphenoid sinus

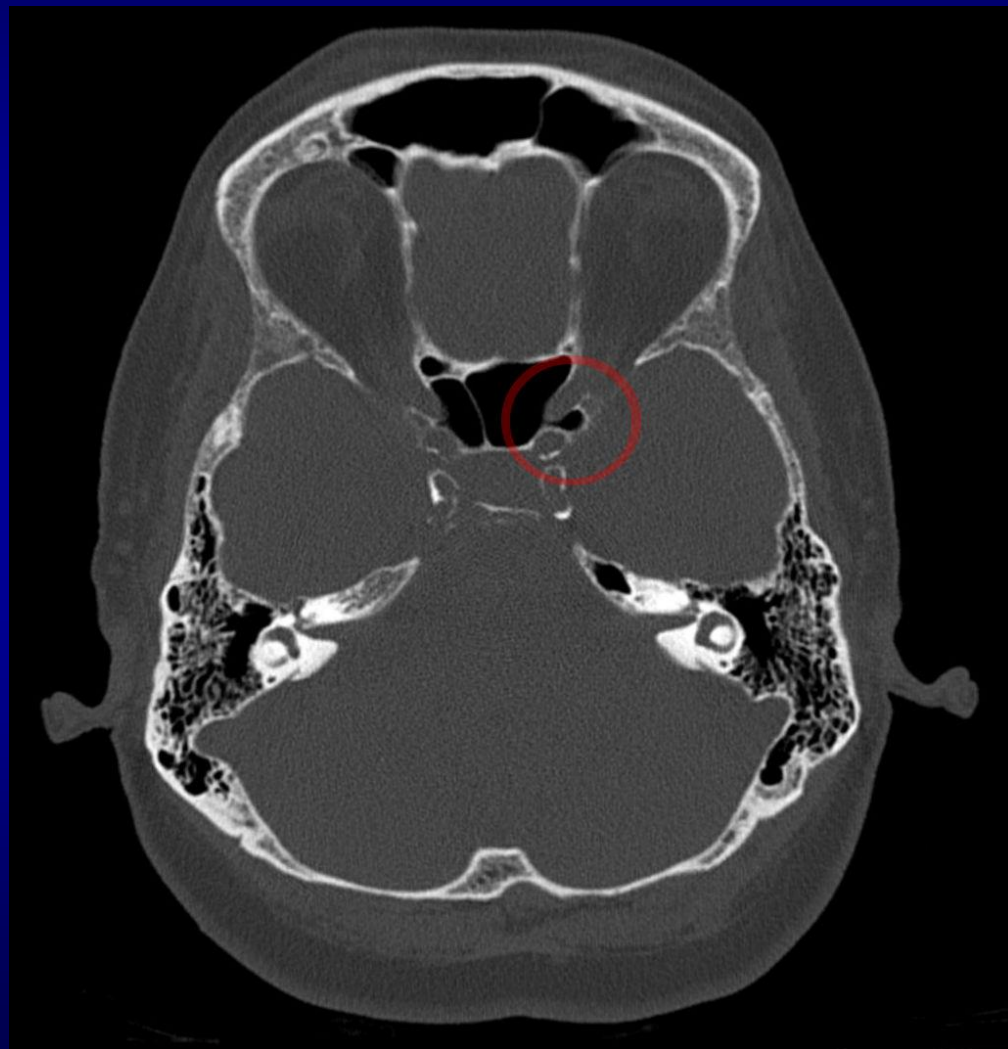
Clinically significant

- Importance of these air cell stems primarily from their location adjacent to the optic nerve and internal carotid artery, with as little as 0.03 mm (median 0.08 mm) of bone separating them ¹.
- Potential damage to these critical structures occurs when attempts to enter the sphenoid sinus endoscopically are made by passing through the posterior wall of the sphenoethmoidal air cell expecting to enter the sphenoid sinus.

Onodi air cell



Onodi air cell



Anatomy

