

SCCa Staging – critical findings

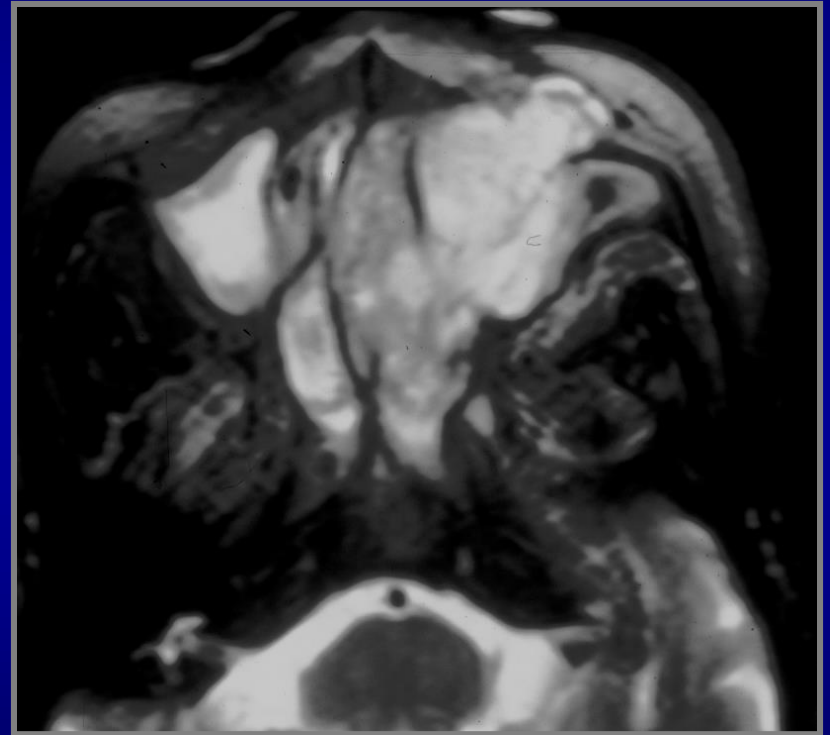
- Primary site
 - Size
 - Bone - maxillary or orbit walls, skull base
 - Local - cheek, nasal cavity, nasopharynx, orbit

SCCa Staging (maxillary)

- T1 – Antral mucosa w/o bone involvement or erosion
- T2 - Hard palate or sinus walls
- T3 – Cheek, orbital walls, pterygoid plates, ethmoids
- T4 - Skull base (cribriform plate or sphenoid sinus), frontal sinus, nasopharynx, orbital apex

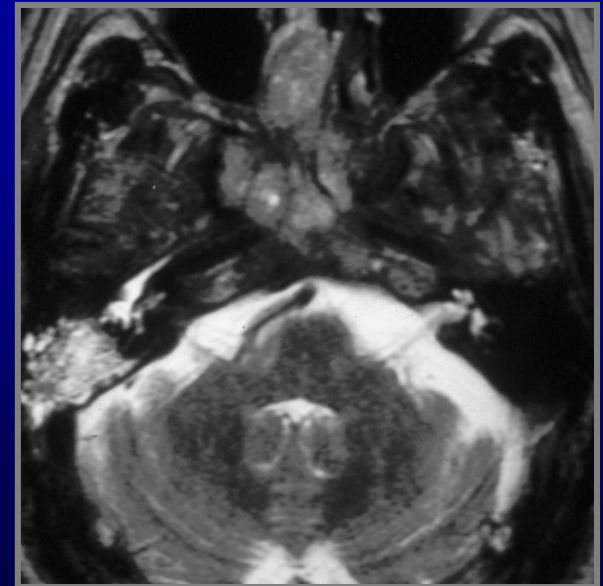
Squamous cell carcinoma

- Most arise in max sinus or nasal cavity
- M > F, adults > 50
- Usually advanced at detection
- Obstructed sinus secretions may make imaging appearance complex



Malignant sinus - SCCa

- CT – bone thinning or destruction
- MR – T2 best differentiates tumor from benign secretions
 - Tumor - ↓ SI
 - Secretions - ↑ SI



Squamous cell carcinoma of the sinonasal area



T2- Lower signal is tumor



- o **80% of cancers in sinus**
- o *Enhancing mass in sinus with invasion and destruction of walls.*
- o *Maxillary is the most common. 80%*
- o **MRI will show Low T2.**