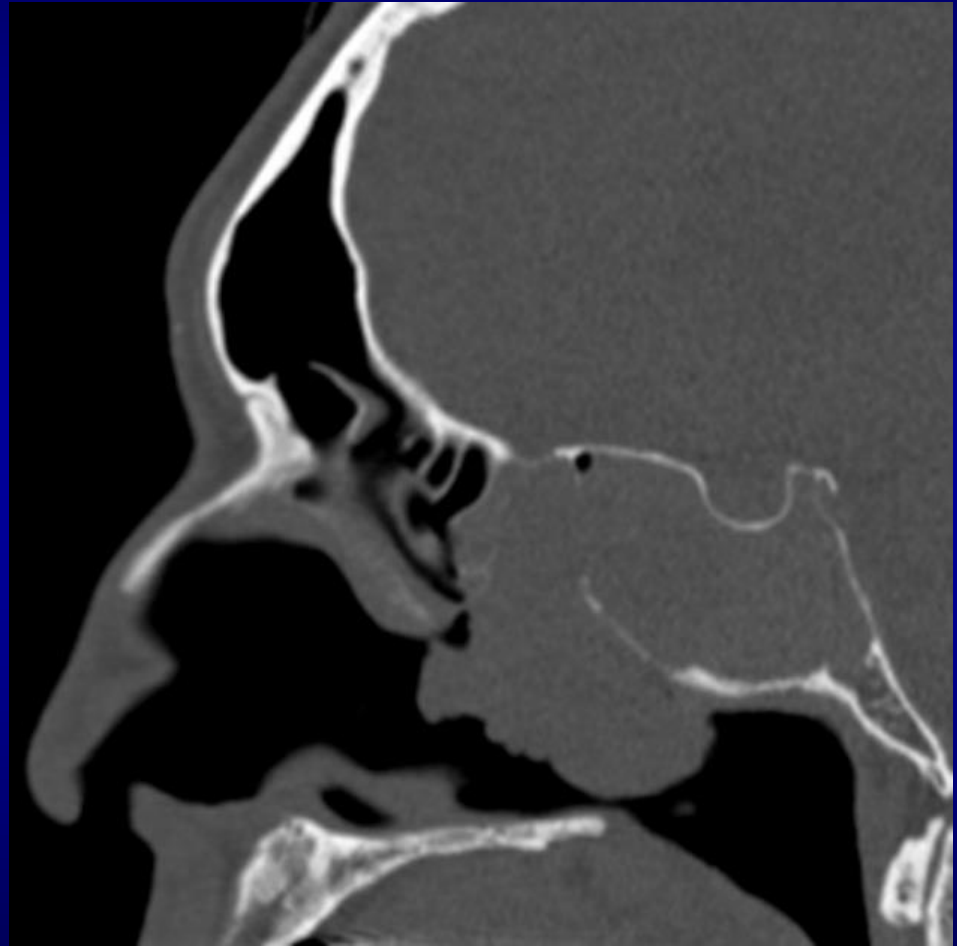
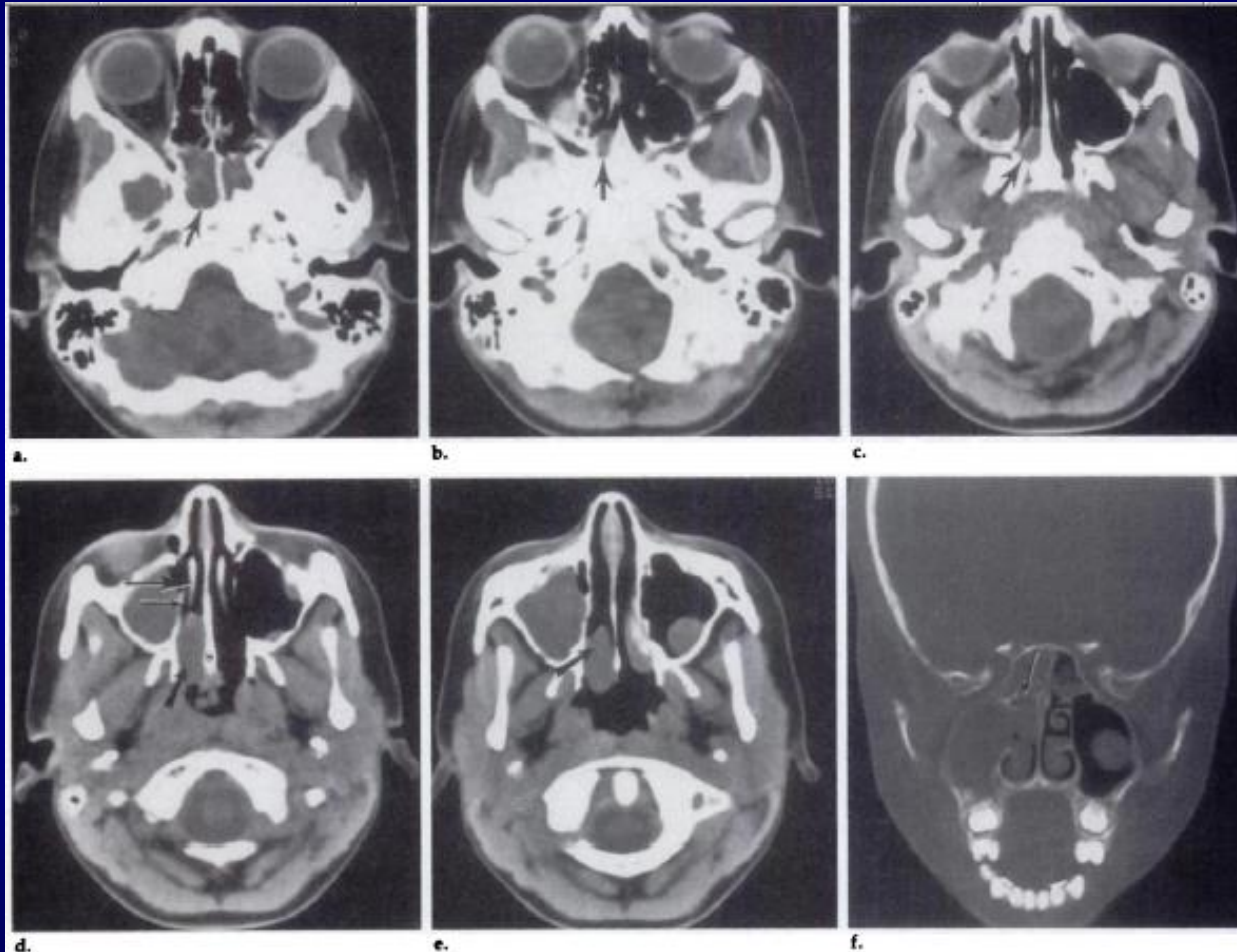


# Sphenoidochoanal polyps

- Soft tissue mass originating from the sphenoid sinus and extending to the posterior choanae via the sphenothmoidal recess.



# Sphenoidochoanal polyps



**Figure 1. Case 1.** (a-e) Sequential axial CT scans (soft-tissue algorithm). (a) The sphenoid sinus is opaque (arrow). (b) A low-attenuation soft-tissue mass extends into the sphenoid recess (arrow). This portion of the polyp is in continuity with the mass in the right sphenoid sinus. (c) The polyp is seen in the posterior nasal cavity (arrow). The right maxillary sinus is also completely opaque, and its walls are thickened (arrowheads). (d) The sphenoidochoanal polyp (solid black arrow) extends between the nasal septum (s) and the middle turbinate (large highlighted arrow). The middle meatus is clear (small highlighted arrow). (e) The inferior aspect of the sphenoidochoanal polyp is in the nasal cavity and choana (arrow). No connection between the polyp and the maxillary antrum could be demonstrated. (f) Coronal CT scan (bone algorithm). The sphenoid ostium (arrow) is widened by the polyp, which extends through the ostium from the sinus into the nasal cavity.