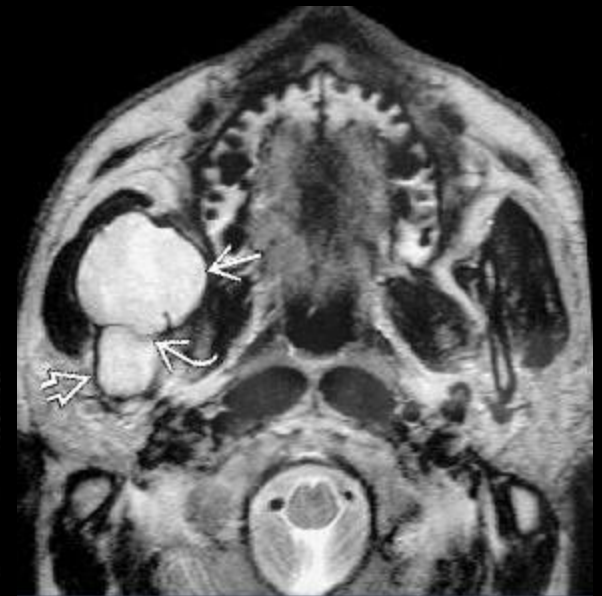


# Odontogenic keratocyst



# Odontogenic keratocyst

- Nonsyndromic developmental jaw cyst with aggressive behavior & **high recurrence rate**
- Best diagnostic clue:
  - Expansile multilocular lucent lesion at 3rd molar
  - 75% at posterior mandible (often near 3rd molar)
  - 50% lucent, unilocular, well-defined, sclerotic rim
  - Distinctly corticated expansile cyst, often with scalloped border, extending along mandible length
  - High attenuation (hemorrhage and/or protein)
- Basal cell nevus (Gorlin) syndrome if multiple