

- The adenohypophysis is comprised of the pars tuberalis, pars intermedia, and pars distalis.
- The neurohypophysis is comprised of the median eminence of hypothalamus, infundibulum, and pars nervosa.
- Periosteal dural layer covers the sellar floor.

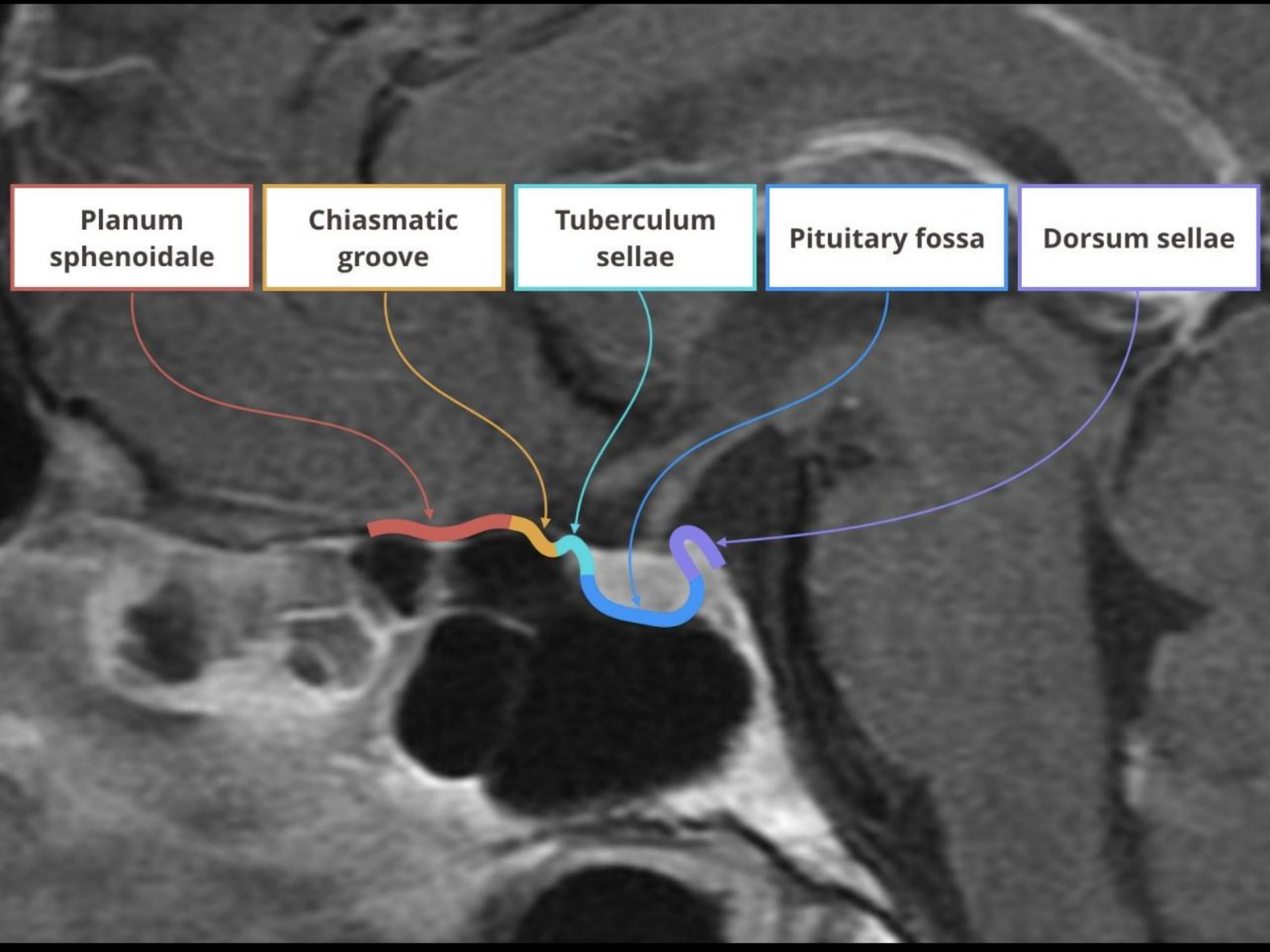
**Planum
sphenoidale**

**Chiasmatic
groove**

**Tuberculum
sellae**

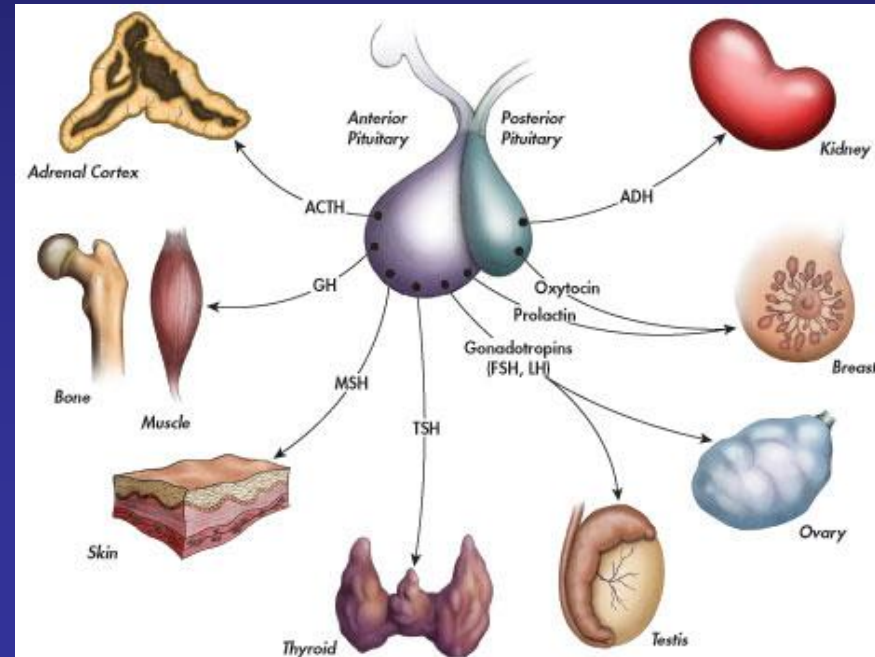
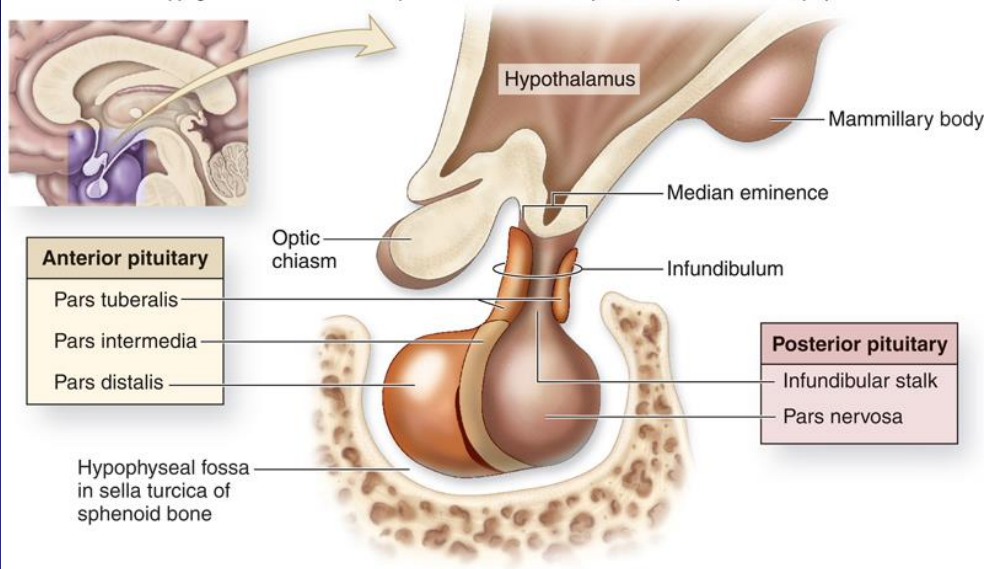
Pituitary fossa

Dorsum sellae



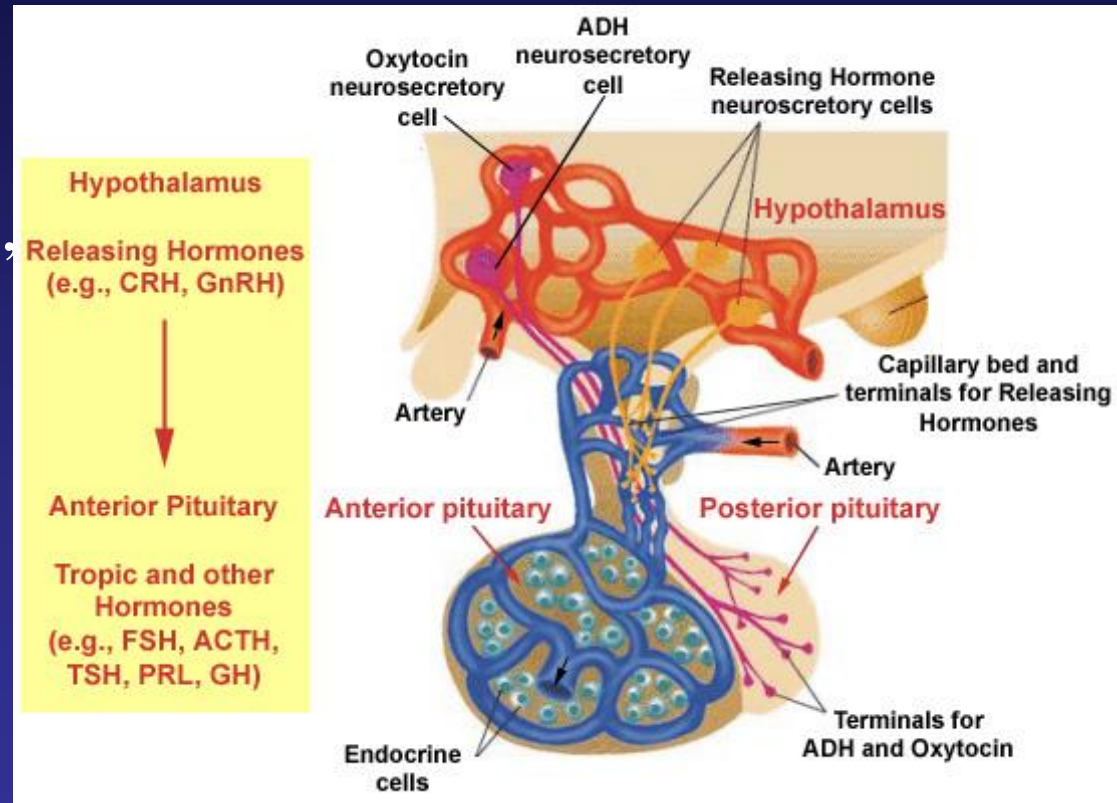
Pituitary Gland

Copyright © The McGraw-Hill Companies, Inc. Permission required for reproduction or display.

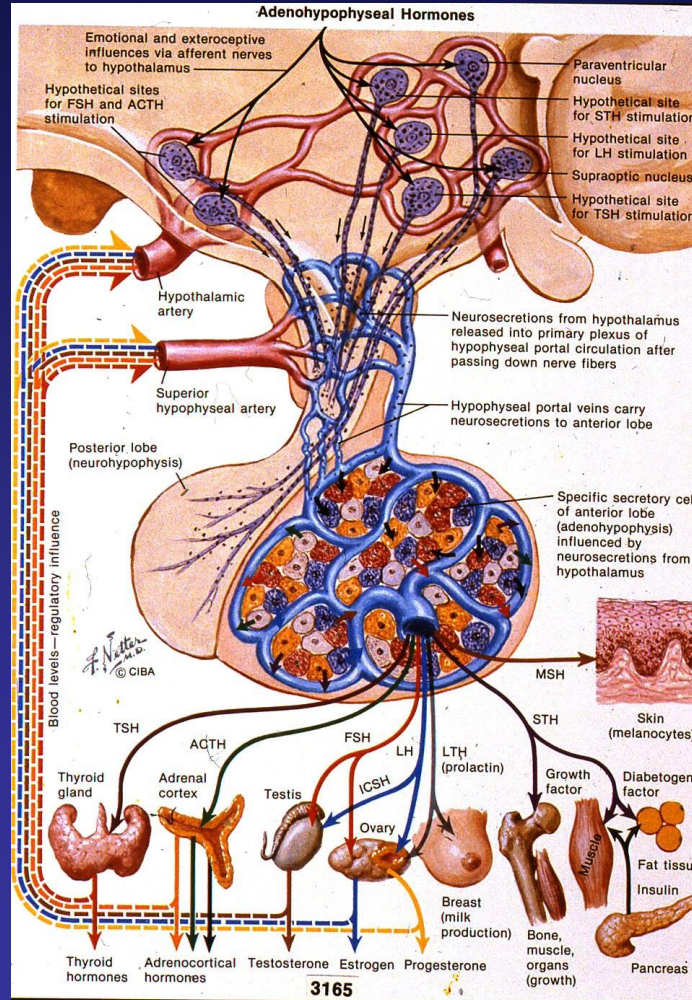


Pituitary gland

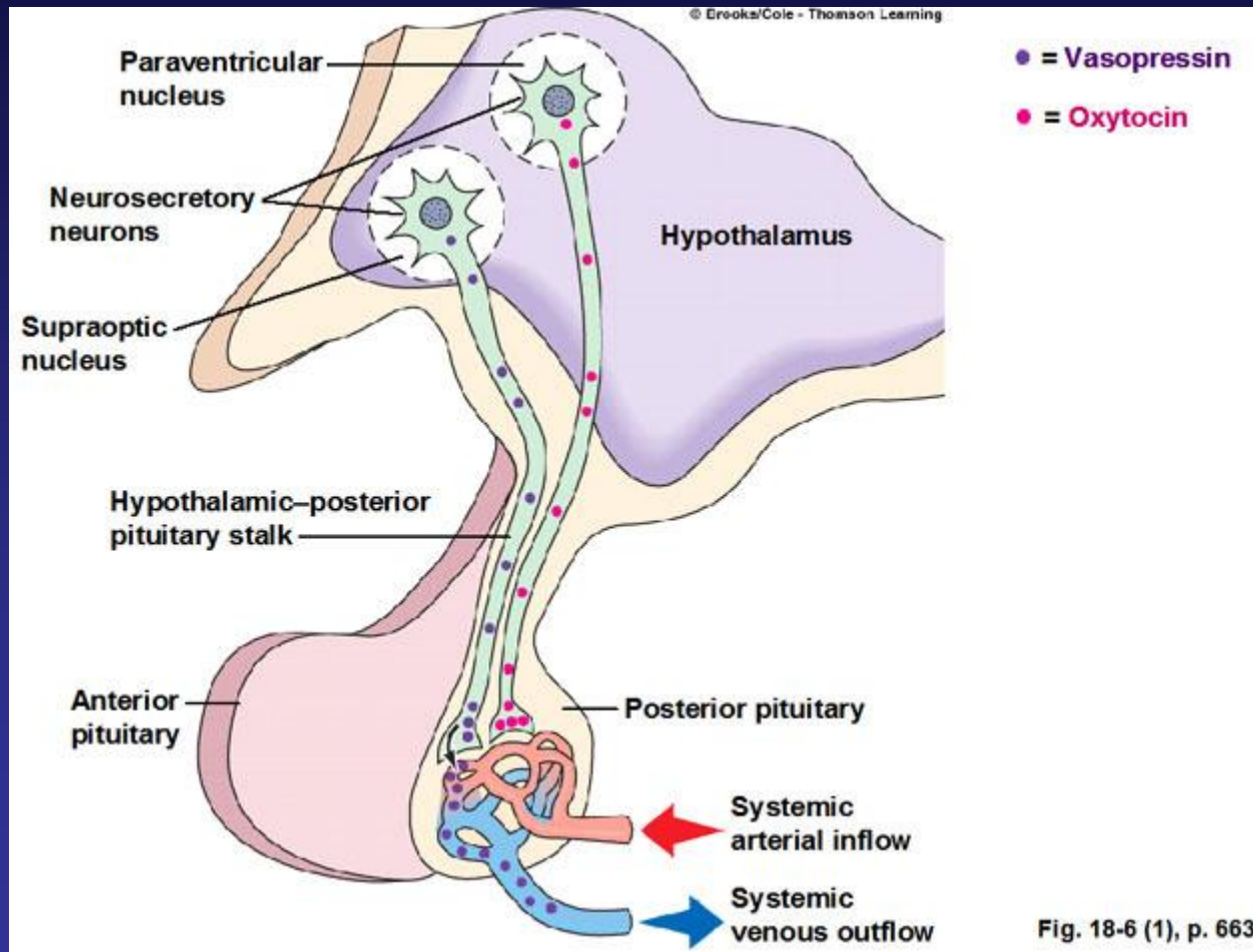
- Posterior Pituitary (ADH and Oxytocin)
- Anterior Pituitary (TSH, ACTH, Gonadotropins, PRL, and GH)



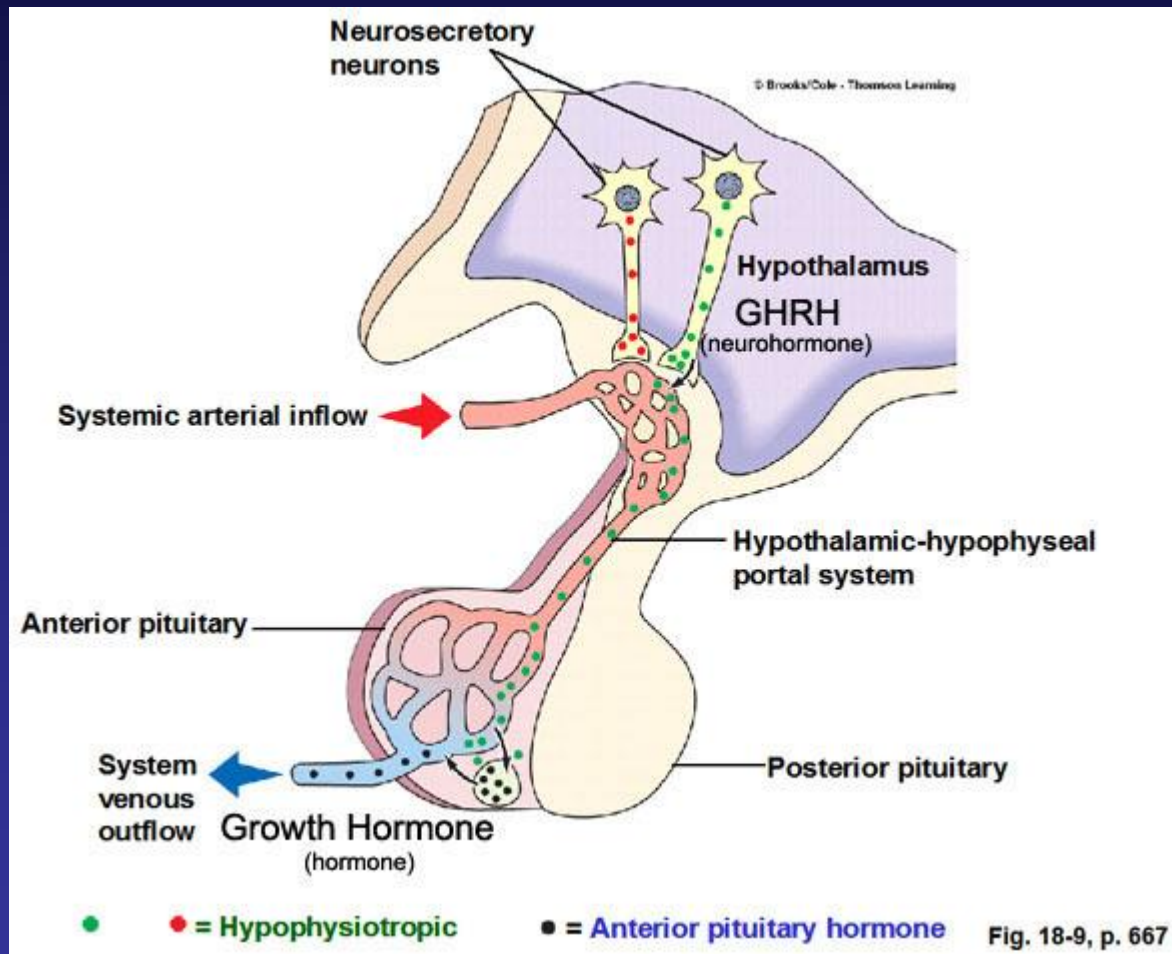
Pituitary Gland



Posterior Pituitary



Anterior Pituitary



Tropic versus direct effects

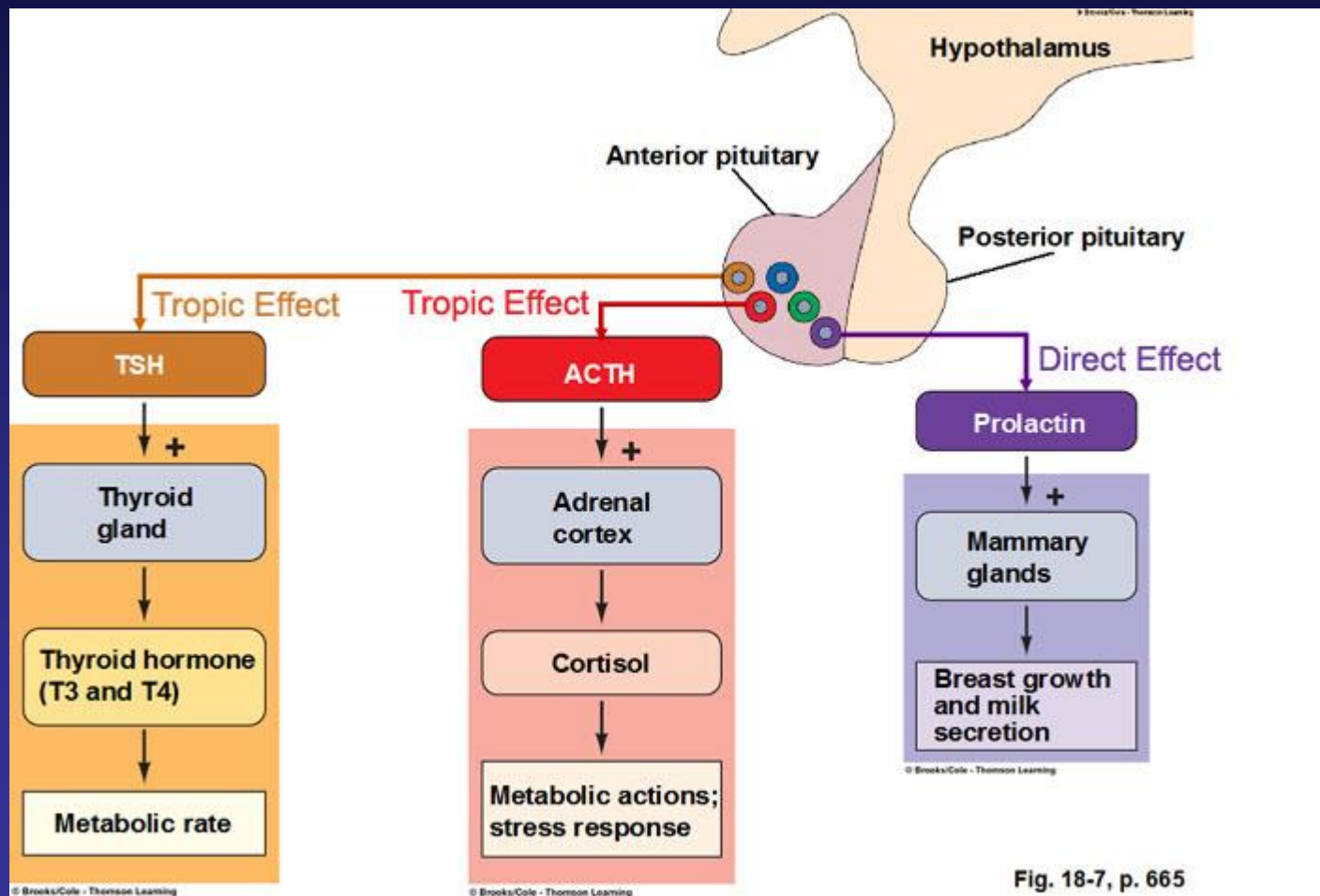
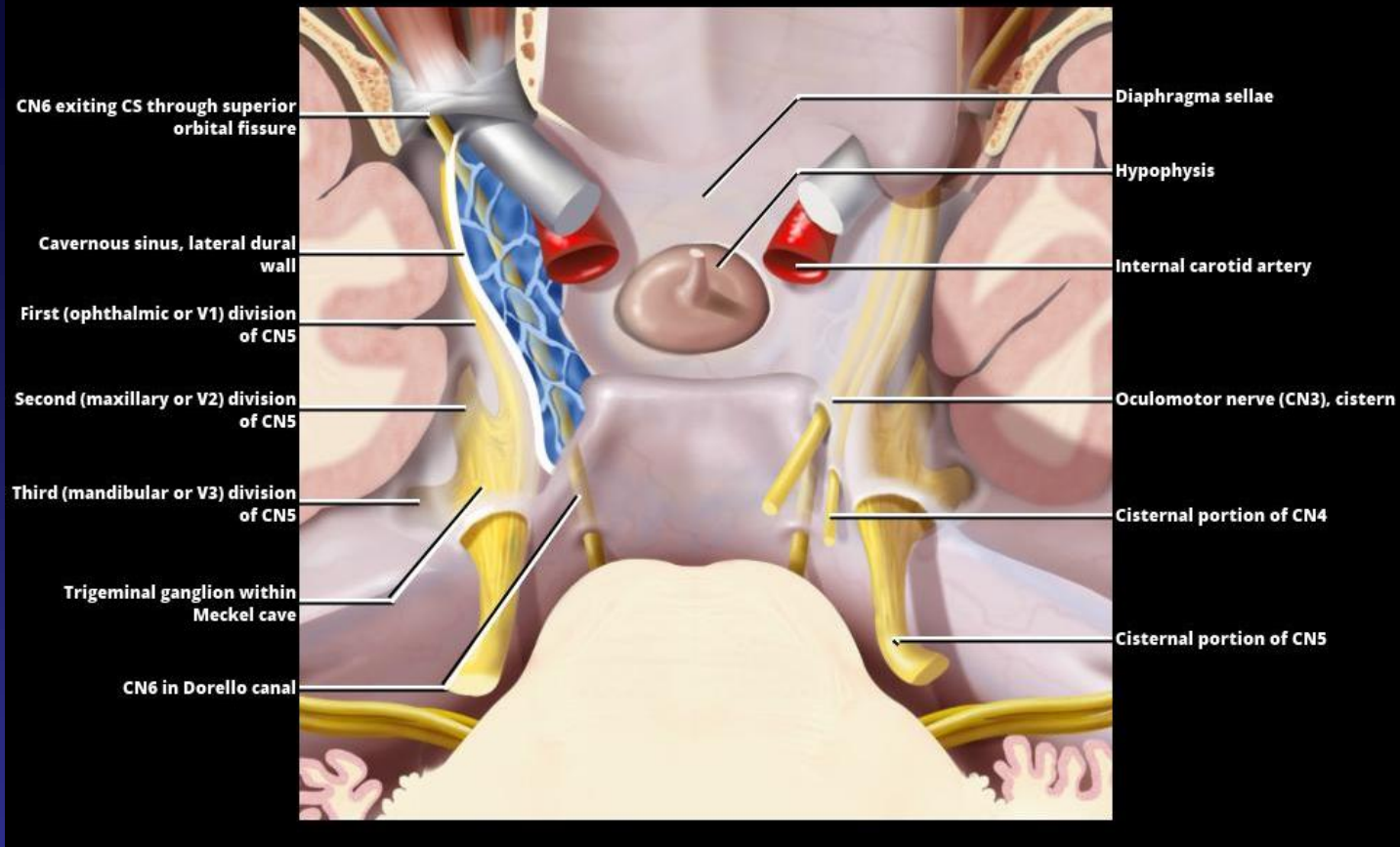


Fig. 18-7, p. 665

Pituitary Gland





- Dura covering the right cavernous sinus is removed to show CN5 & 6.
- All CNs are shown in the left CS.
- The mandibular division of CN5 does not run through the CS but exits from Meckel cave inferiorly to enter foramen ovale.
- Note the CS is not a single venous channel but is extensively septated.