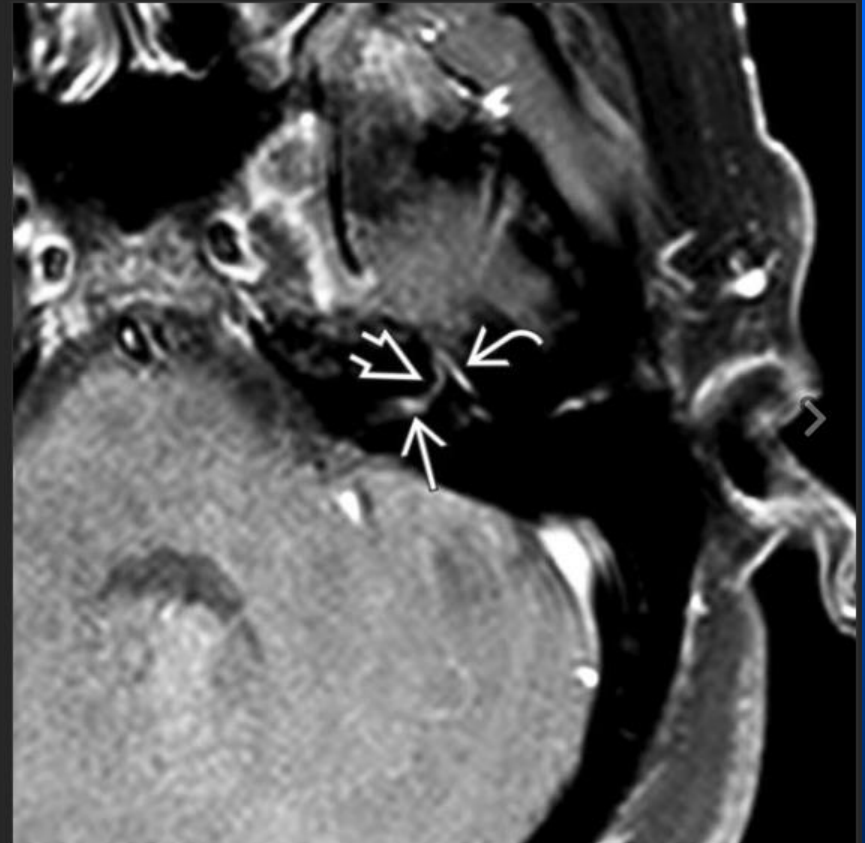


# Bells Palsy

- Herpetic peripheral facial nerve paralysis secondary to herpes simplex virus
- Fundal "tuft" and labyrinthine segment CN7 show intense asymmetric enhancement
- Entire intratemporal CN7 may enhance
- **Classic rapid-onset BP requires no imaging in initial stages**
- If atypical Bell palsy, search with imaging for underlying lesion.



[Download to Presentation](#)

Axial T1WI C+ FS MR shows classic findings of Bell palsy with the fundal "tuft" sign →, labyrinthine ↷, and tympanic ↶ facial nerve segment enhancement.