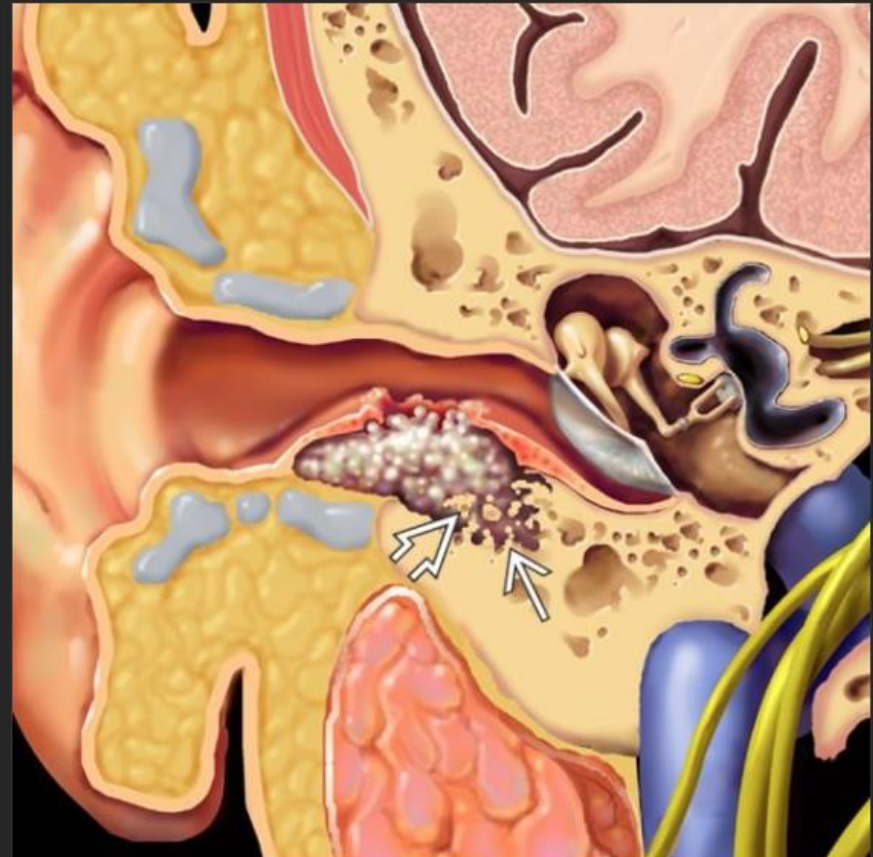


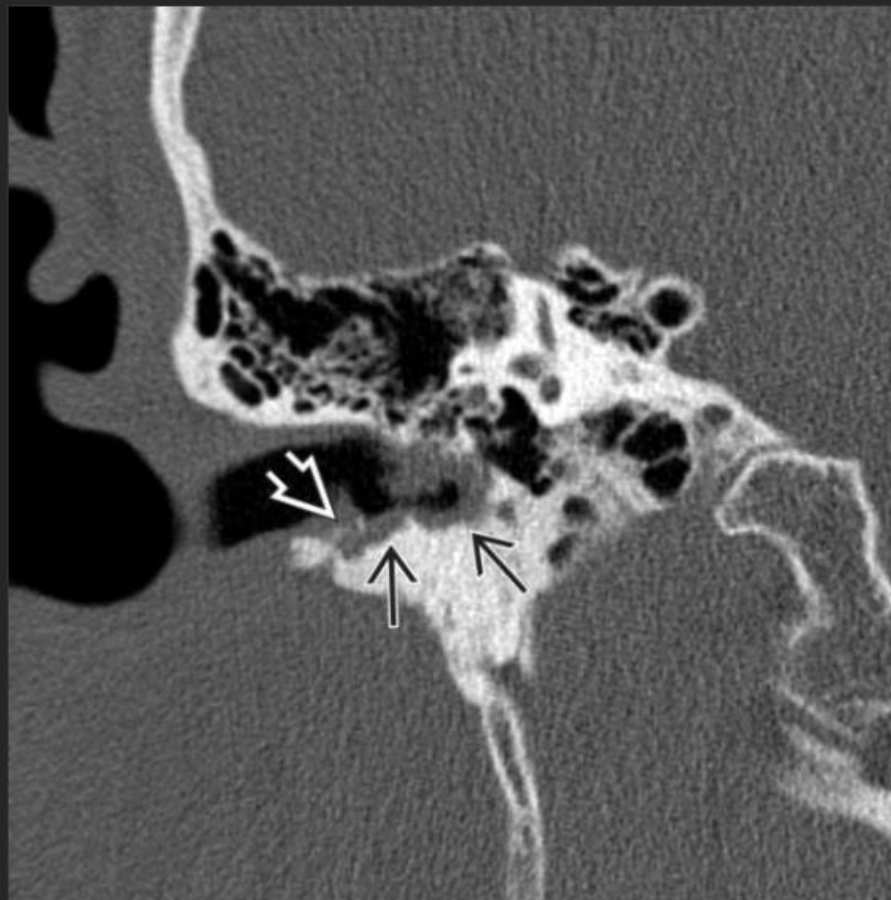
EAC cholesteatoma

- Unilateral scalloping soft tissue bony EAC mass
- Bone fragments within soft tissue mass (50%)
- May extend locally into subjacent bony structures
- Tympanic membrane intact; middle ear spared.
- Spontaneous: Abnormal migration of EAC ectoderm
- Secondary: Postoperative or post-traumatic



[Download to Presentation](#)

Coronal graphic shows an **EAC cholesteatoma** as an erosive, scalloping submucosal mass in the inferior bony external auditory canal. Note bone erosion → with bony flecks ⇨ within cholesteatoma matrix.



[Download to Presentation](#)

Coronal bone CT reveals an EAC cholesteatoma as a soft tissue mass along the inferior bony canal with underlying osseous erosion ➞ and bony flecks within the cholesteatoma matrix ➞.