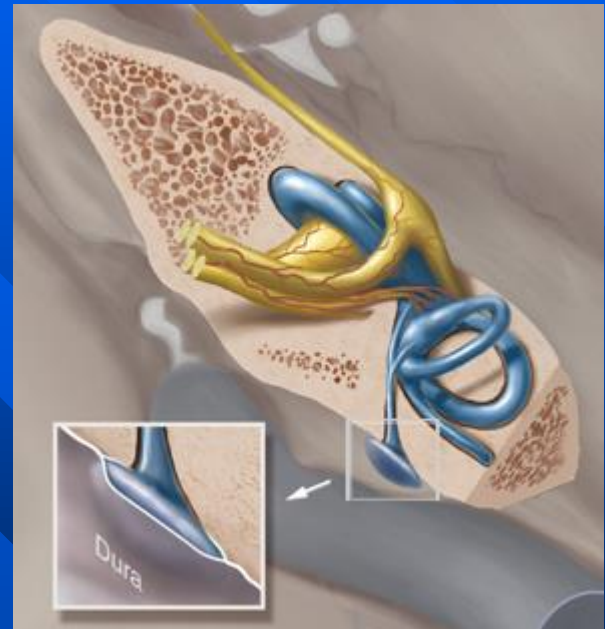
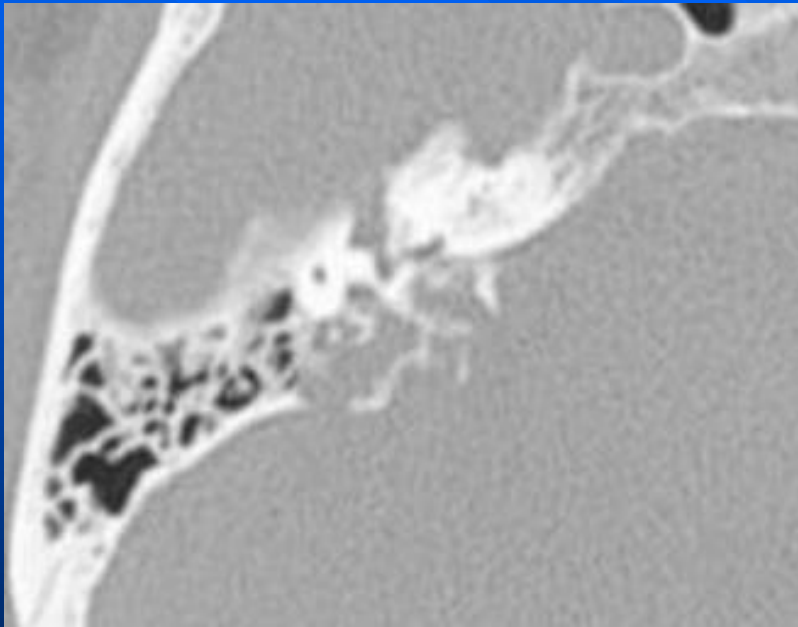


# Endolymphatic tumor

- Very rare, locally invasive tumors of endolymphatic sac.
- Early detection of ELST is very important, because early surgical intervention may prevent further hearing loss.
- Do not metastasise, but are highly locally aggressive.
- Mean age at onset is 22 years.
- Most often associated with von Hippel-Lindau disease.

# Endolymphatic tumor on Right



Endolymphatic channel

# Endolymphatic tumor

