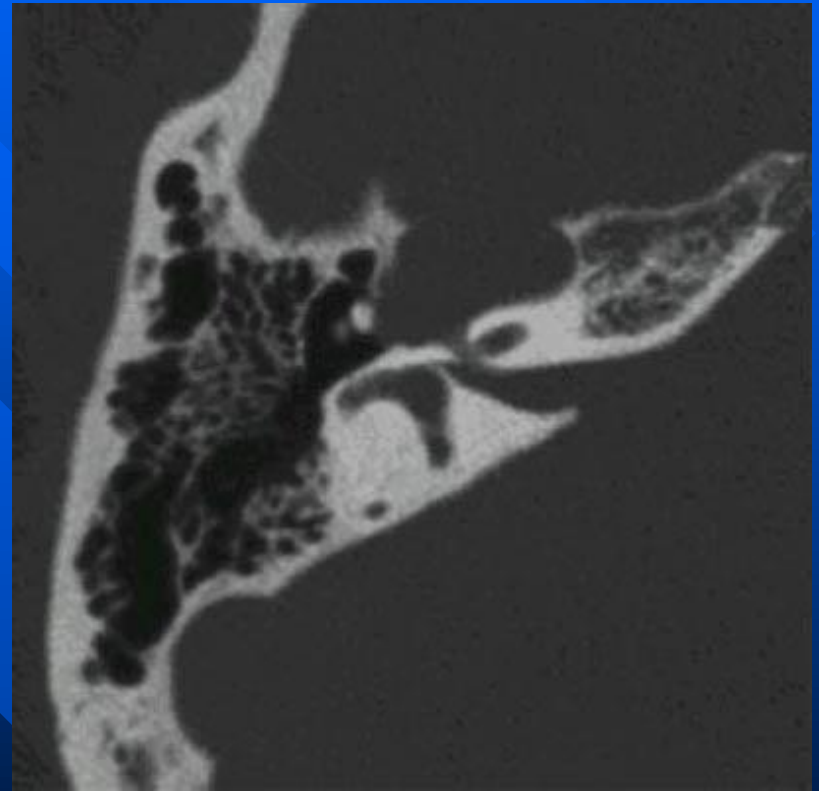
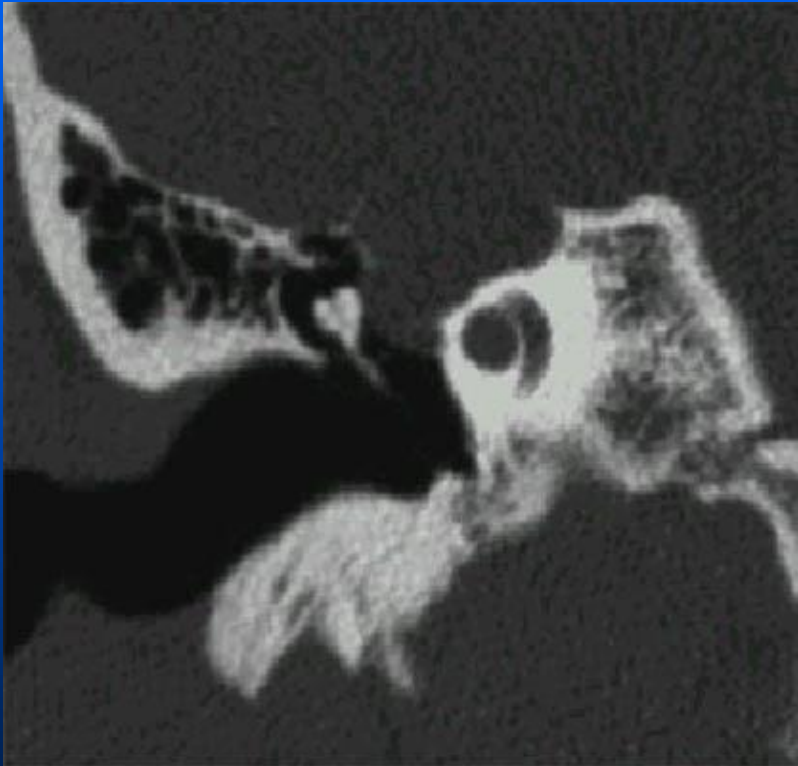


Geniculate ganglia schwannoma



Top Differential Diagnoses

- *Normal intratemporal facial nerve enhancement*
- *Intratemporal facial nerve schwannoma*
 - T1 C+ MR reveals tubular enhancing mass, smoothly enlarging CN7 canal (bone CT)
 - Comment: Most commonly centered in geniculate ganglion like FNVM
- *Bell palsy*
 - Acute onset of peripheral CN7 paralysis
 - Imaging: T1 C+ MR shows prominent enhancement of all or most of intratemporal CN7
- *Perineural parotid malignancy on intratemporal CN7*
 - Stylomastoid foramen is tissue filled
 - CN7 may be involved to CPA-IAC
 - Mastoid air cell invasion also possible
 - Comment: Continuous linear nature different from focal FNVM