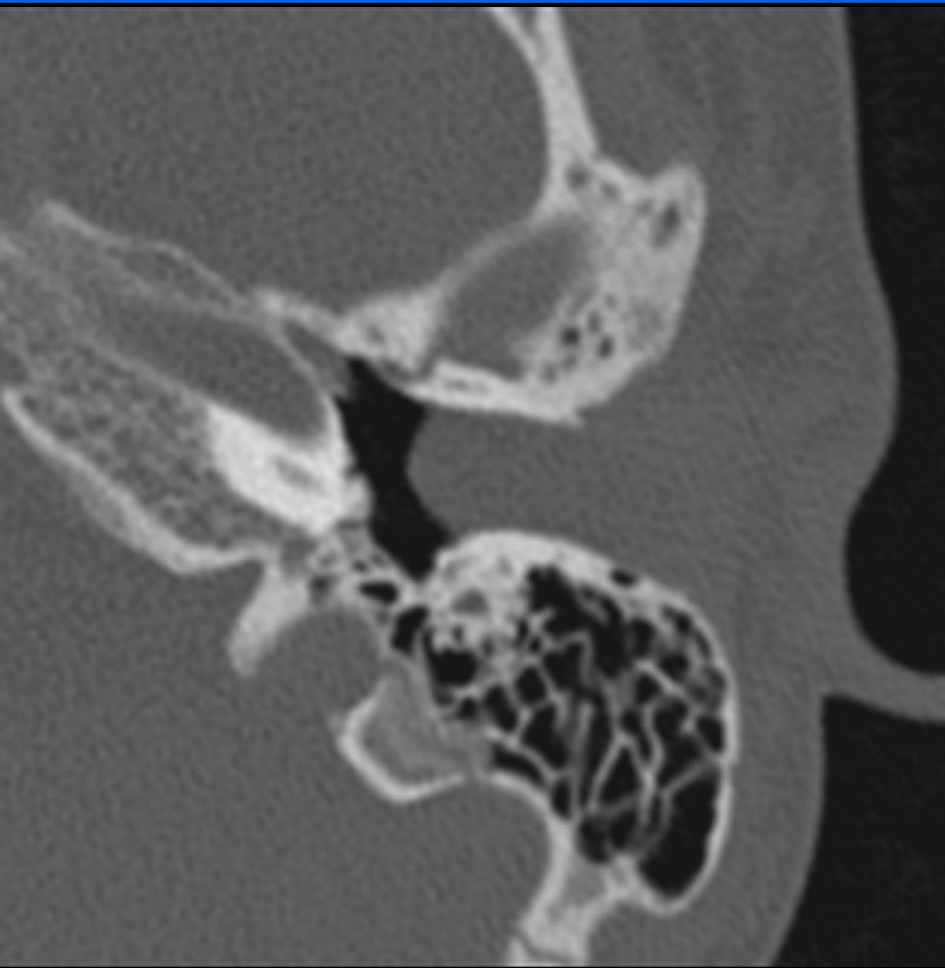


Keratosis Obturans

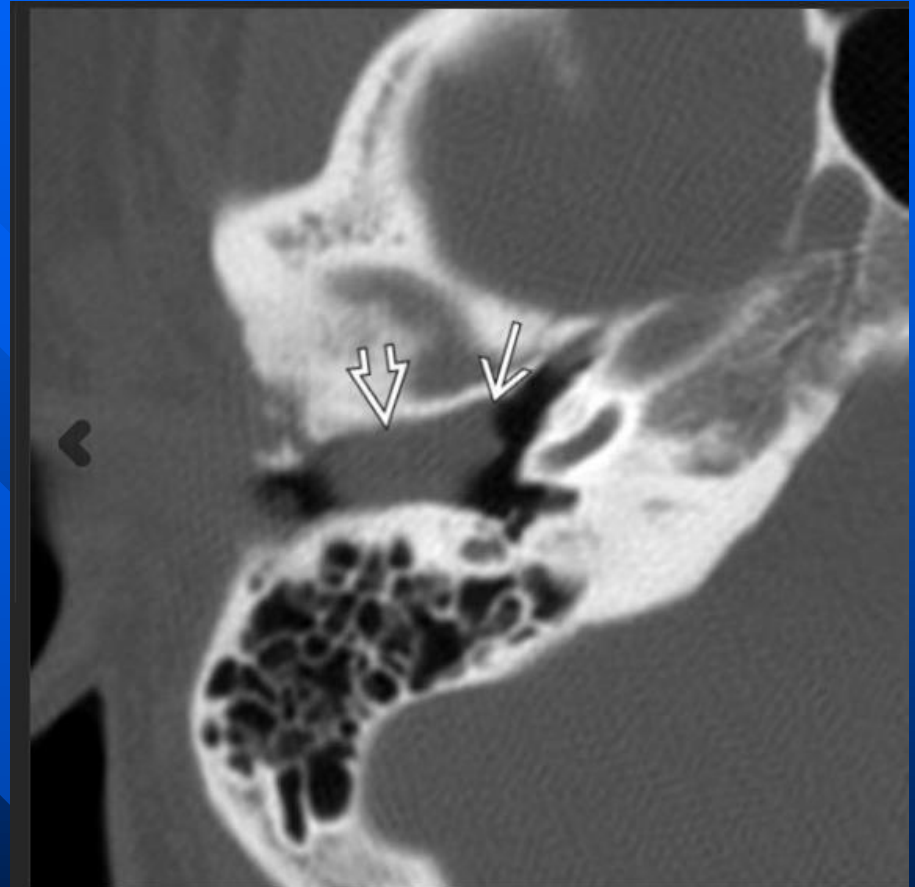
- Abnormal accumulation & obstruction of bony EAC from desquamated keratin without erosive bony changes.
- Benign-appearing luminal soft tissue lesion partially or completely filling EAC
- May diffusely enlarge EAC
- No bony erosive change (cf. EAC cholesteatoma)
- Bilateral (50%)

Keratosus Obturans



Keratosis Obturans

- "KO" & "EAC cholesteatoma" terms often confused
- KO: EAC luminal lesion without bony erosions
- EAC cholesteatoma: Submucosal lesion with EAC erosions \pm bony flecks (50%)
- Both lesions consist of exfoliated keratin



[Download to Presentation](#)

Axial bone CT in this patient with otoscopic evidence of EAC obstruction shows a soft tissue "plug" \Rightarrow in the EAC extending laterally from the tympanic membrane \rightarrow . Note absence of underlying bony changes.