

Disco vertebral destruction in Ankylosing spondylitis

- Inflammatory involvement of the intervertebral discs by spondyloarthritis.
- 8% of patients with ankylosing spondylitis,
- Commonly affects the lower thoracic and lumbar spine
- These are commonly referred to as **andersson lesions**
- Andersson lesions may mimic infective spondylitis

Discussion

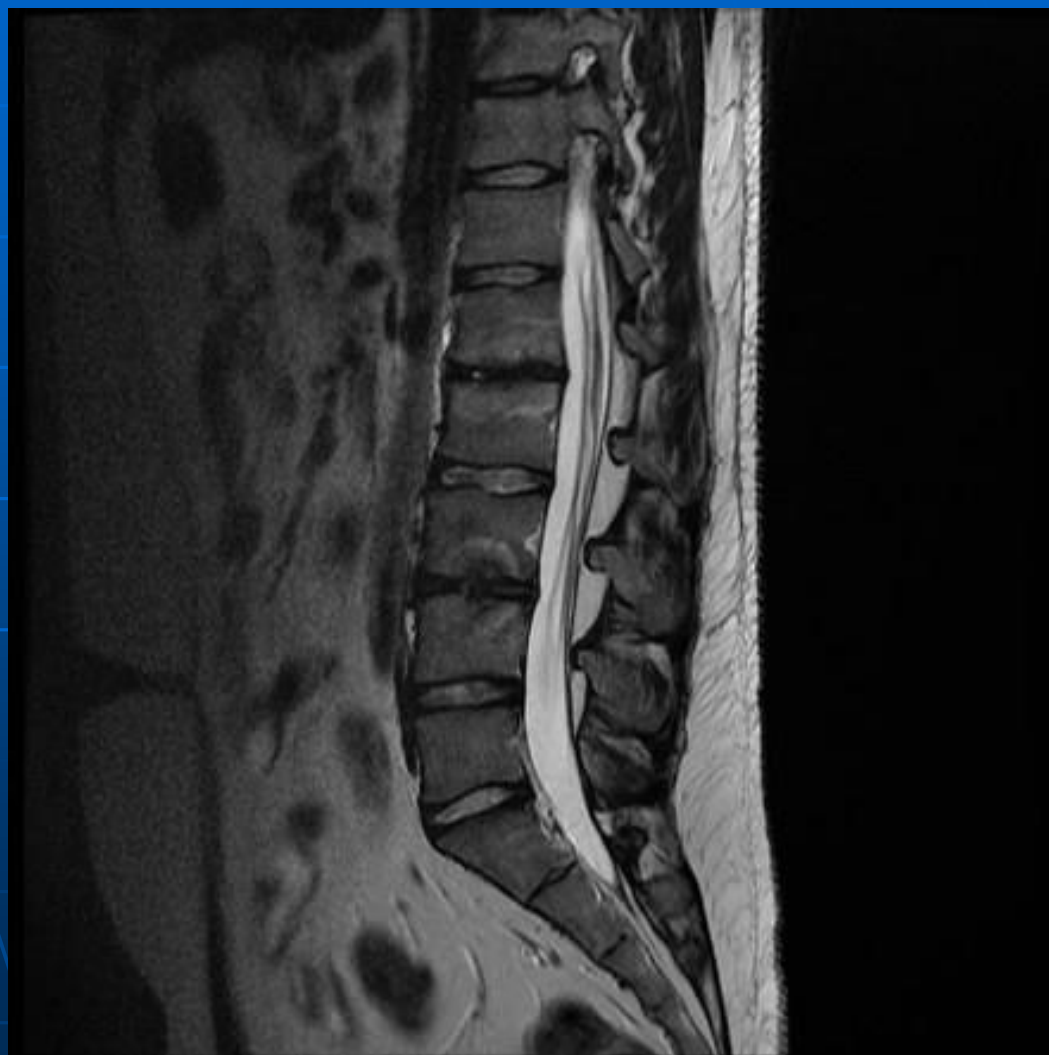
Andersson lesions

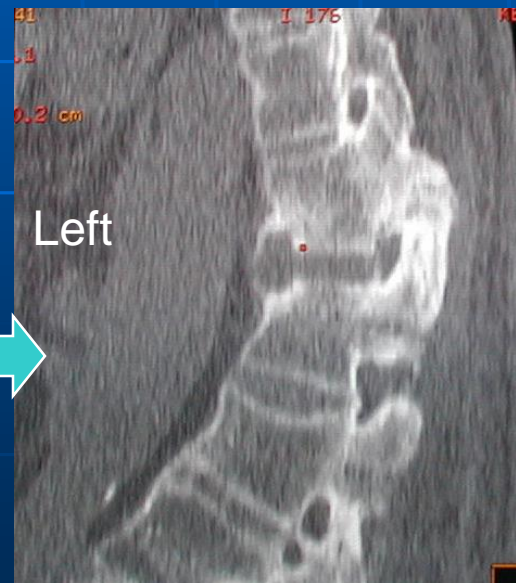
- CT and MRI - Absence of soft tissue swelling, paravertebral mass and displacement of and loss of fat planes
- Major part of disc space shows decreased T2 signal
- Infective spondylitis
 - MRI shows diffuse increased signal on T2 of the affected disc space

Disco vertebral destruction in Ankylosing spondylitis

Radiological features :

- Disc space narrowing
- Boney destruction
- Sclerosis
- Angular kyphosis of the affected spinal segment





35 Year old male with back pain