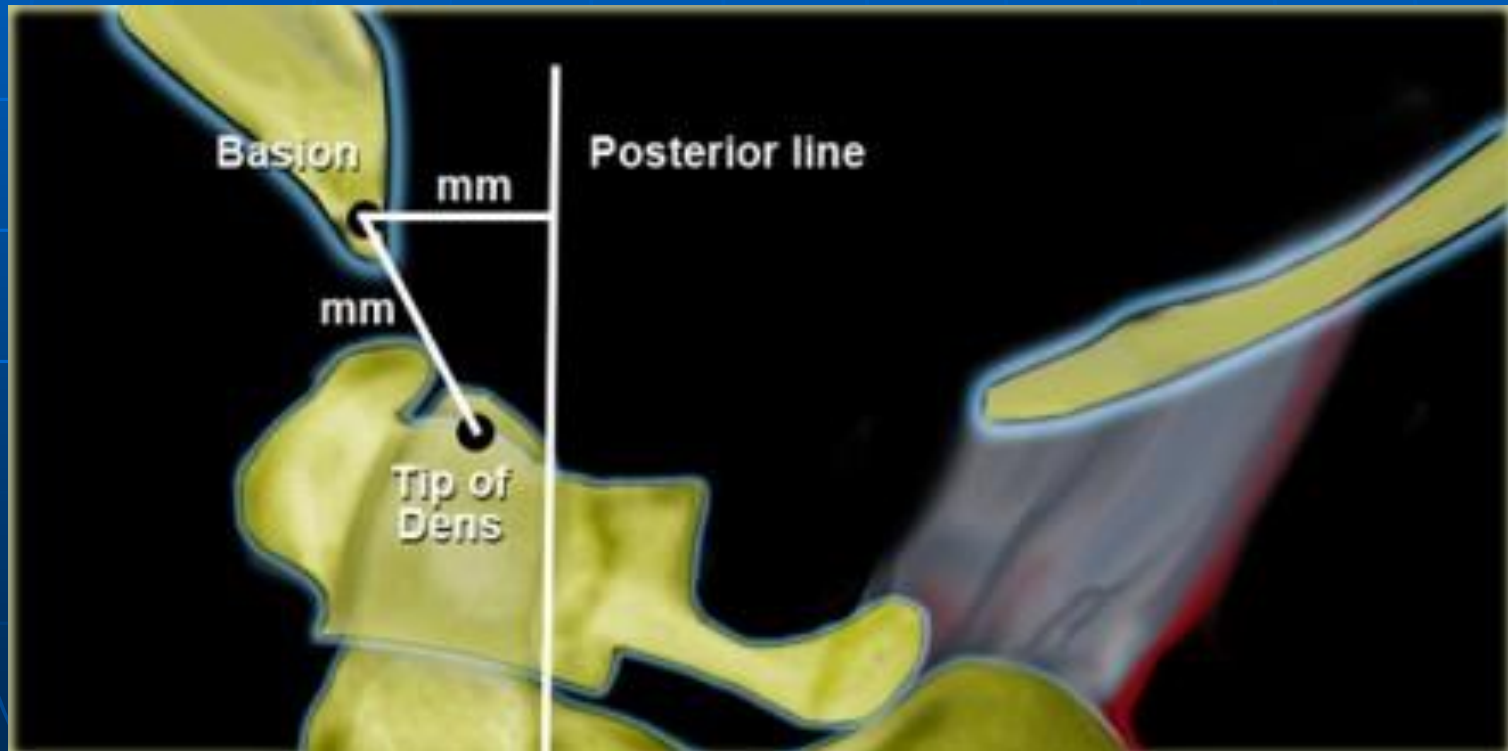


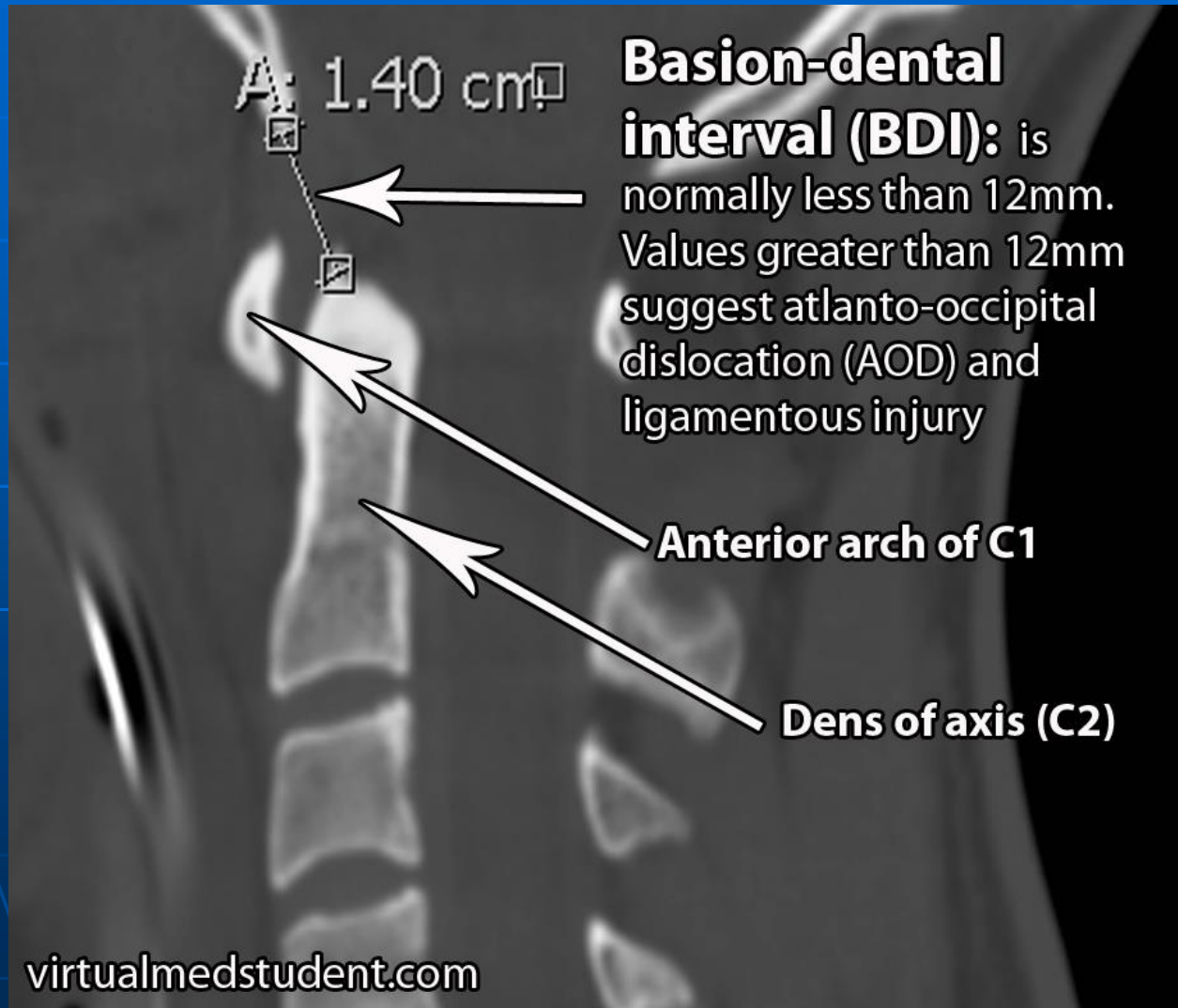
Atlanto-occipital dislocation

- Uncommon injury characterized by complete disruption of all ligaments between occiput and atlas with subluxation or complete dislocation of the occipitoatlantal factes.
- Anterior translation of the skull on the vertebral column is the most common presentation.
- Death usually occurs immediately from stretching of the brainstem, which causes respiratory arrest.
- It is reported to occur in 31% of fatal MVAs.
- It is more common in children due to the larger head.
- Up to 50% of atlanto-occipital dislocations are overlooked initially, which can have catastrophic results, since cervical traction can be fatal.
- Power's ratio is sometimes used as a measurement for the relationship between skull base and spine, but **Harris' measurement for AO-dissociation has a greater sensitivity**

Harris' measurement

- *AO-Dissociation Rule of twelves* = distance from tip of dens to basion or from basion to posterior line should not exceed 12 mm in an adult.





Power Ratio

