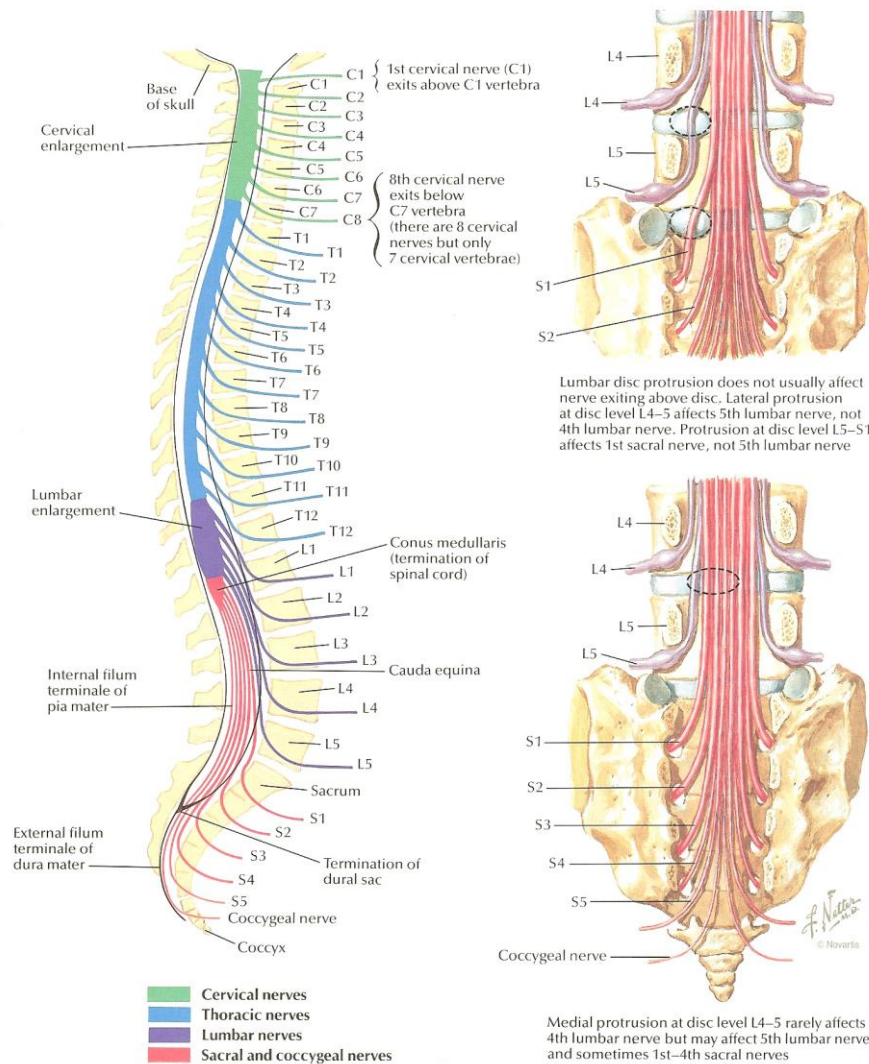


Nerve Roots

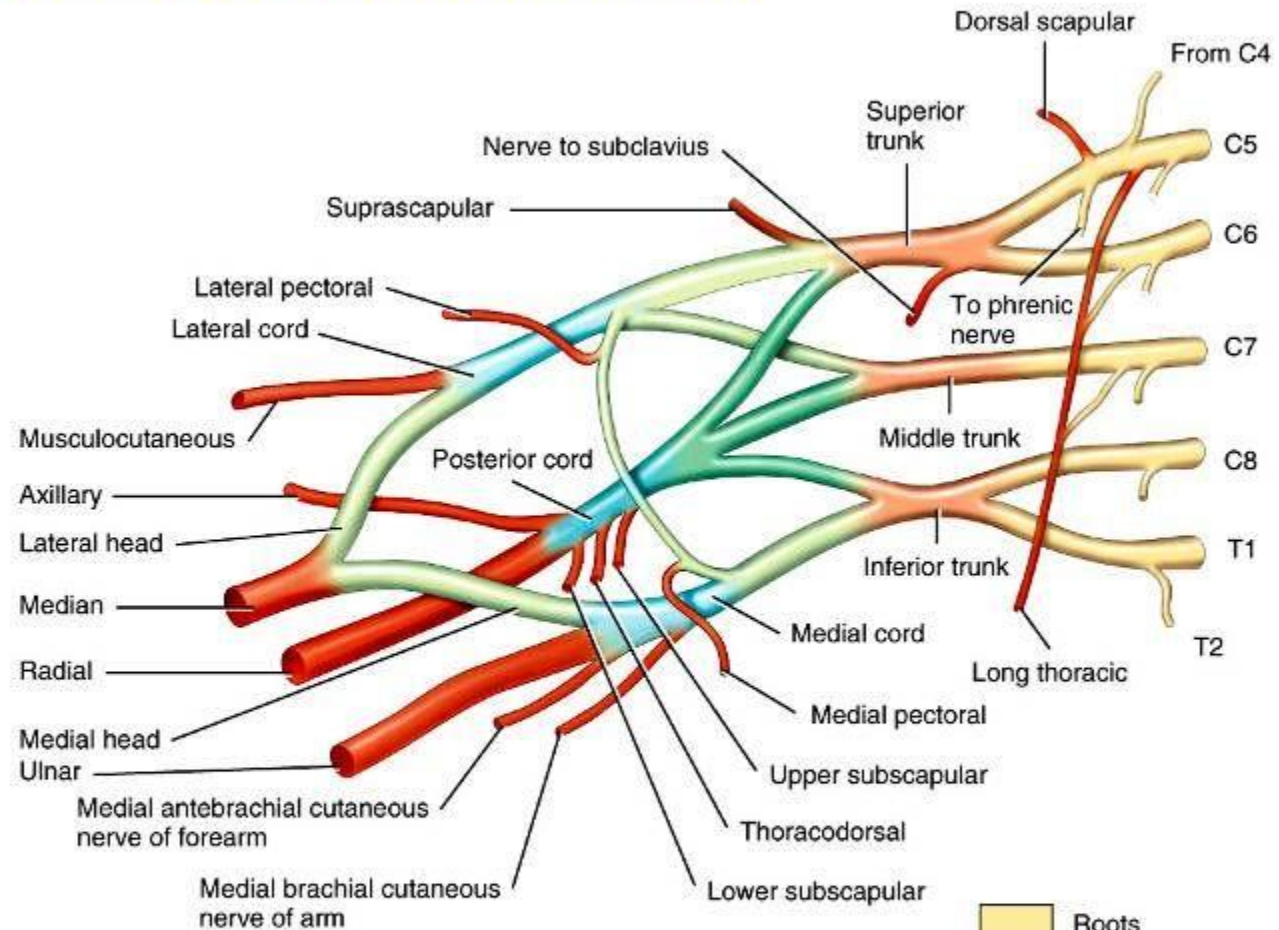
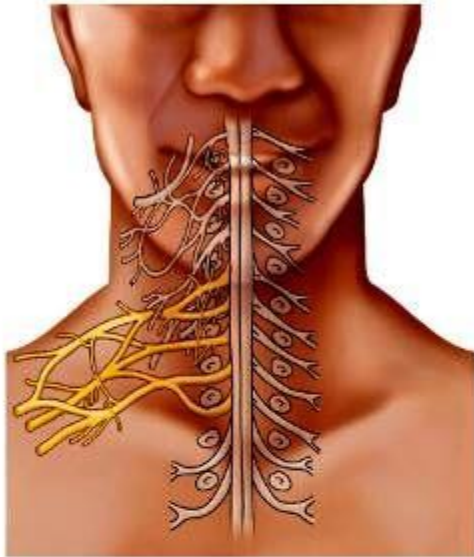
Relation of Spinal Nerve Roots to Vertebrae



Brachial plexus

- Network of nerves formed by the anterior rami of the lower four cervical nerves and first thoracic nerve (C5, C6, C7, C8, and T1).
- This plexus extends from the spinal cord, through the cervicoaxillary canal in the neck, over the first rib, and into the armpit.
- It supplies afferent and efferent nerve fibers to the chest, shoulder, arm and hand.
- Responsible for cutaneous and muscular innervation of the entire upper limb, with two exceptions:
 - The trapezius muscle innervated by the spinal accessory nerve (CN XI)
 - Area of skin near the axilla innervated by the intercostobrachial nerve.

Brachial Plexus



(a) Origin of brachial plexus



MNEMONIC for subunits of the brachial plexus:
Risk Takers **D**on't **C**autiously **B**ehave.
Roots, **T**runks, **D**ivisions, **C**ords, **B**ranches

