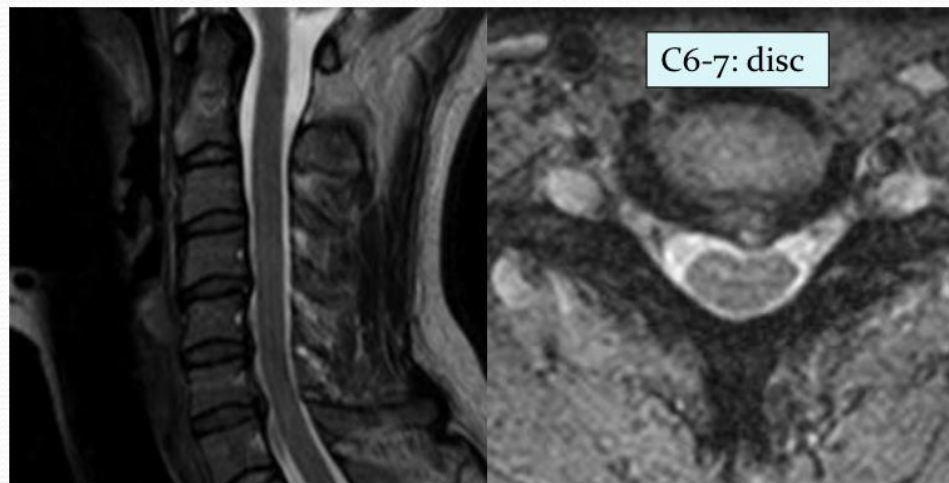
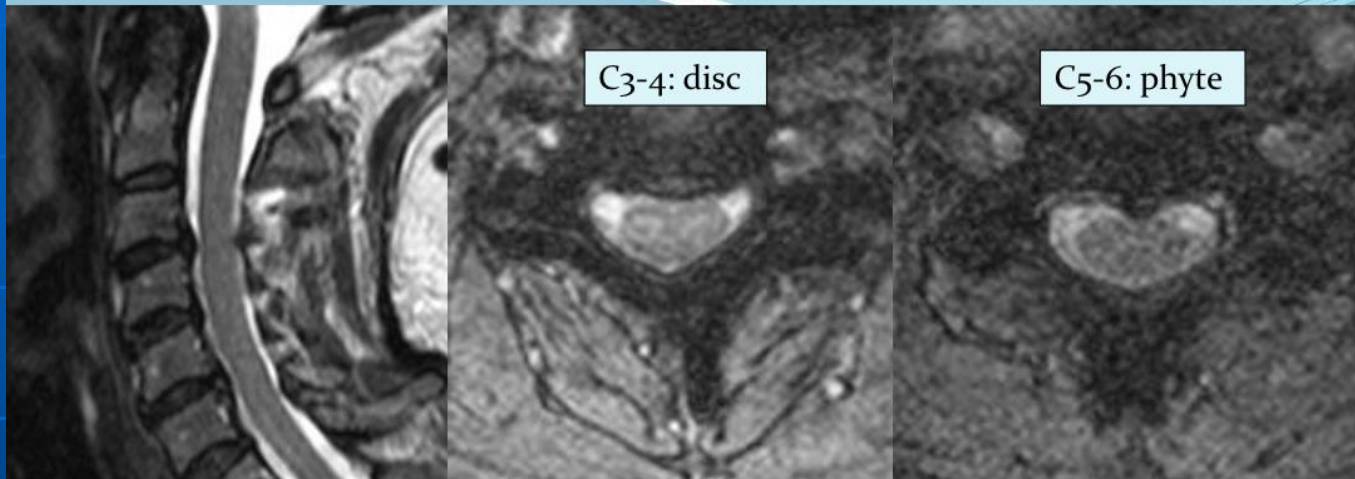


Osteophytes

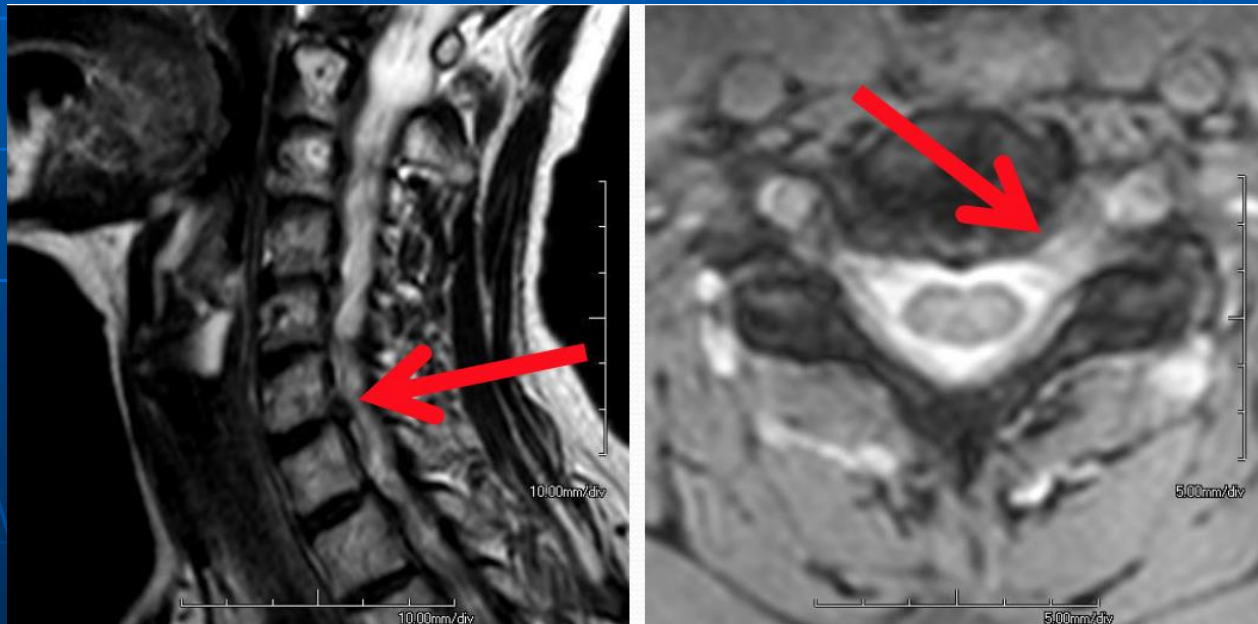
- Disk/osteophyte complex" or "hard disc"
- Gradient-echo imaging in cervical spine helps distinguish disc from osteophyte
- Hypointense → osteophyte
Hyperintense → disc

Example



Look out for very small HNPs

- Small HNPs can still be very symptomatic



Oblique reformats can help visualize the disc

