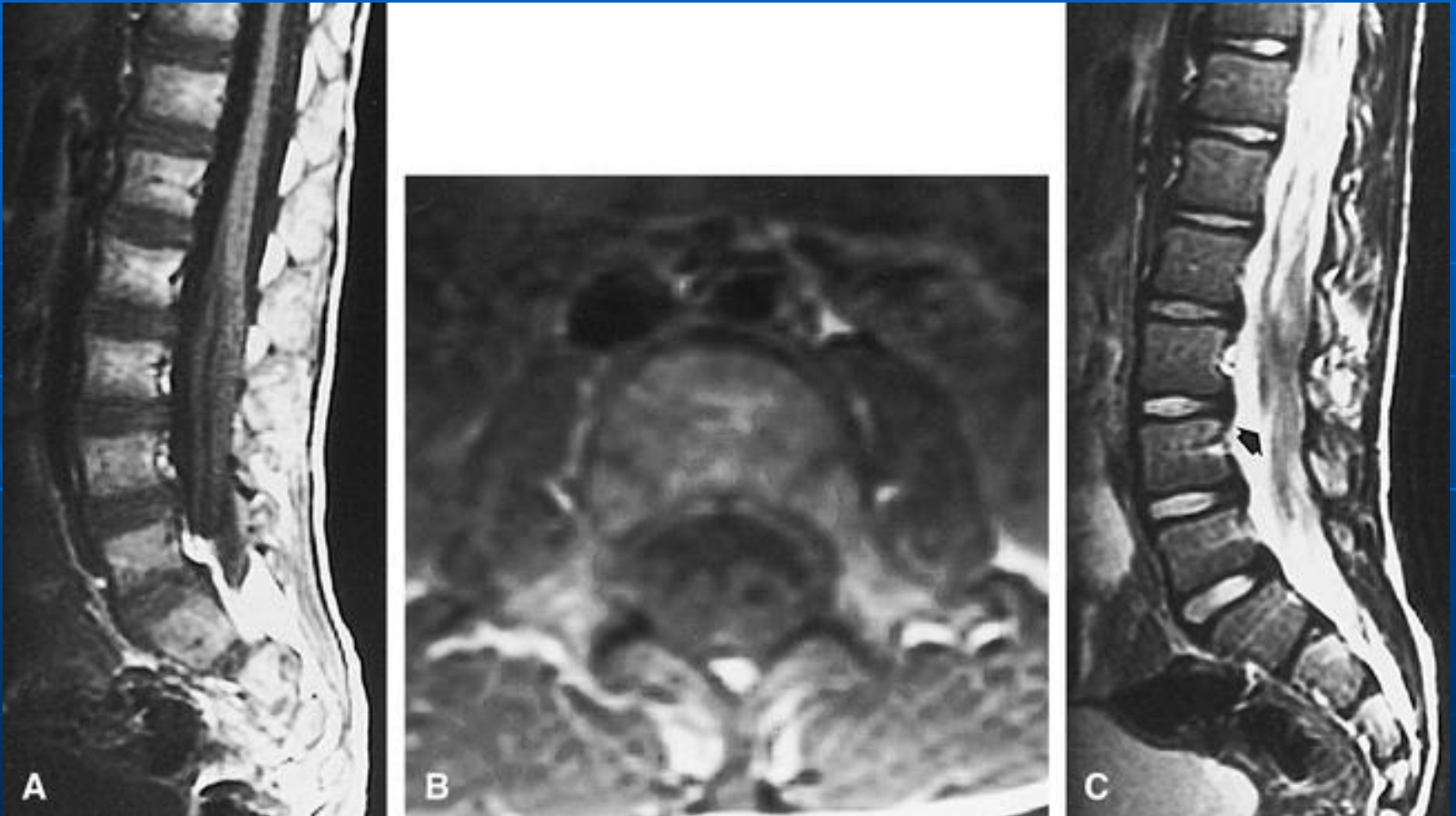


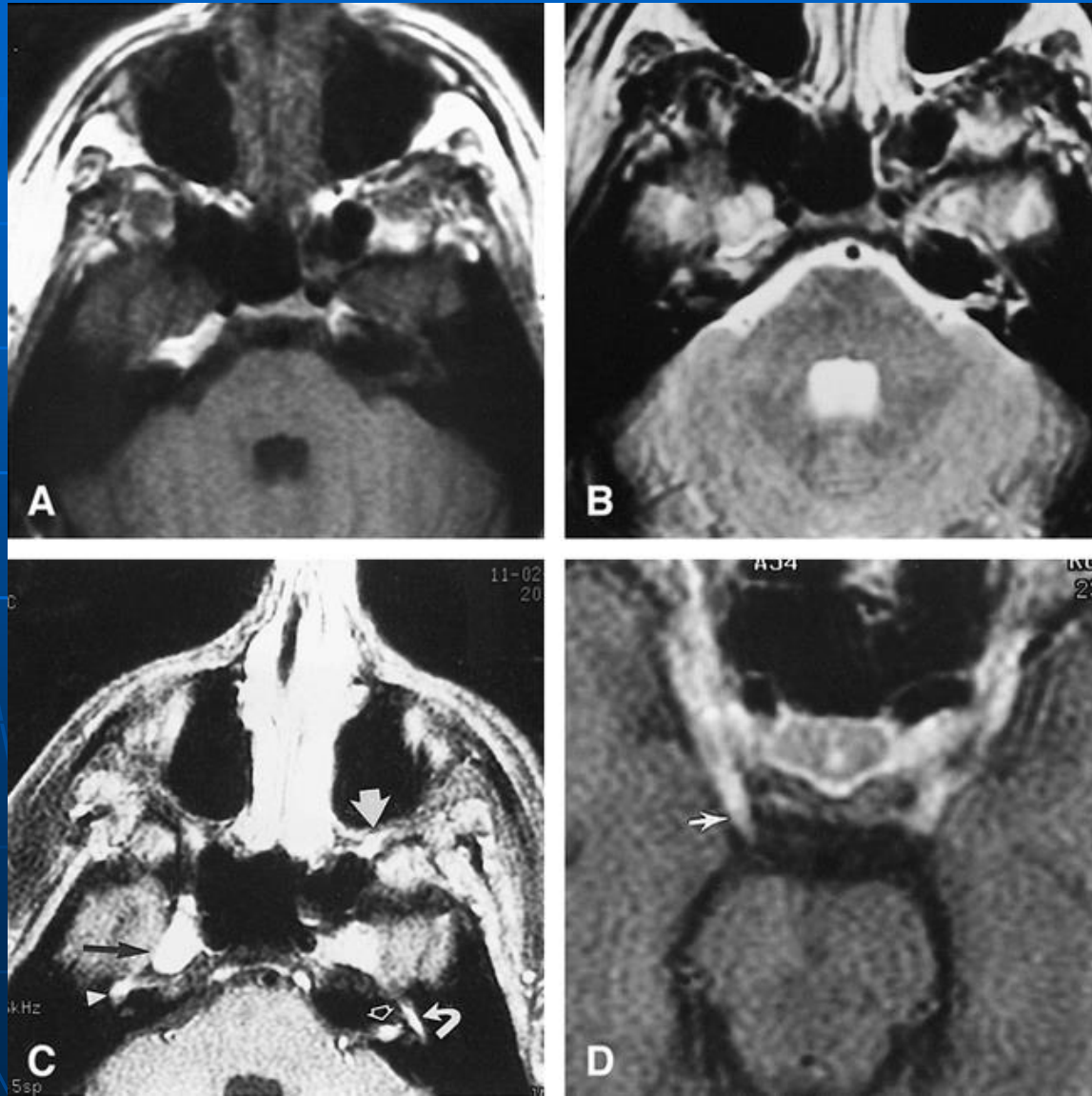
# Dejerine-Sottas disease

- Rare hereditary motor and sensory neuropathy that presents with distal extremity motor and sensory symptoms as well as palpable peripheral nerves.
- Cranial nerve involvement is reportedly seen in approximately 15% of cases

# Dejerine-Sottas disease



# Dejerine-Sottas disease



# Differential diagnosis of enlarged nerve roots

## ■ **Nodular Thickening**

- CSF Seeding (carcinomatous meningitis)
- Granulomatous disease
- Arachnoiditis
- Nerve sheath tumors (NF1 >> NF2)

## ■ **Smooth Thickening**

- Charcot-Marie-Tooth (inflammatory demyelinating polyneuropathy)
- Dejerine-Sottas
- *Chronic Inflammatory Demyelinating Polyradiculoneuropathy (CIDP)*