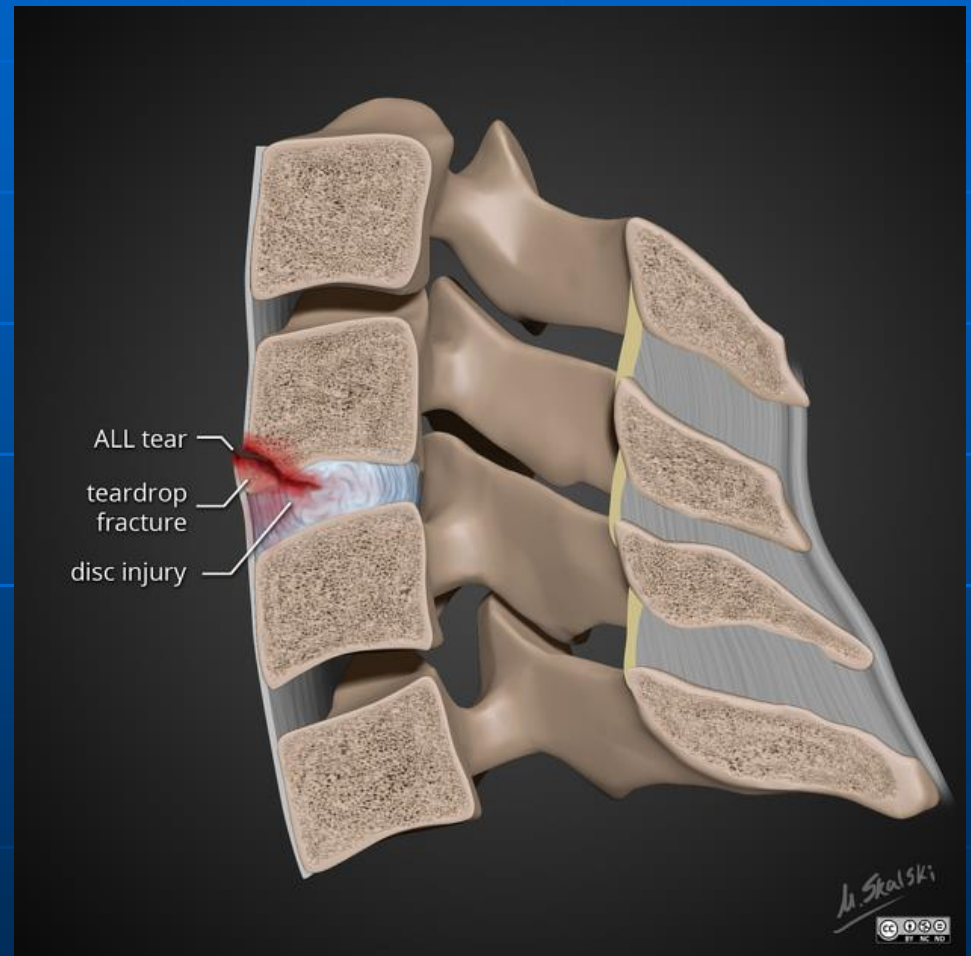


Extension Teardrop Fracture

- Occurs due to forced extension of the neck with resulting avulsion of the anteroinferior corner of the vertebral body.
- Extension teardrop fractures are stable in flexion, and unstable in extension as the anterior longitudinal ligament is disrupted.
- Extension teardrop is not considered as severe as flexion teardrop fractures.

Extension Teardrop Fracture



Extension Teardrop Fracture



In older patients the C2 vertebral body is commonly affected due to degenerative ankylosis of lower levels. Associated cervical spine fractures are common.

The teardrop fragment is avulsed and is attached to the anterior longitudinal ligament.