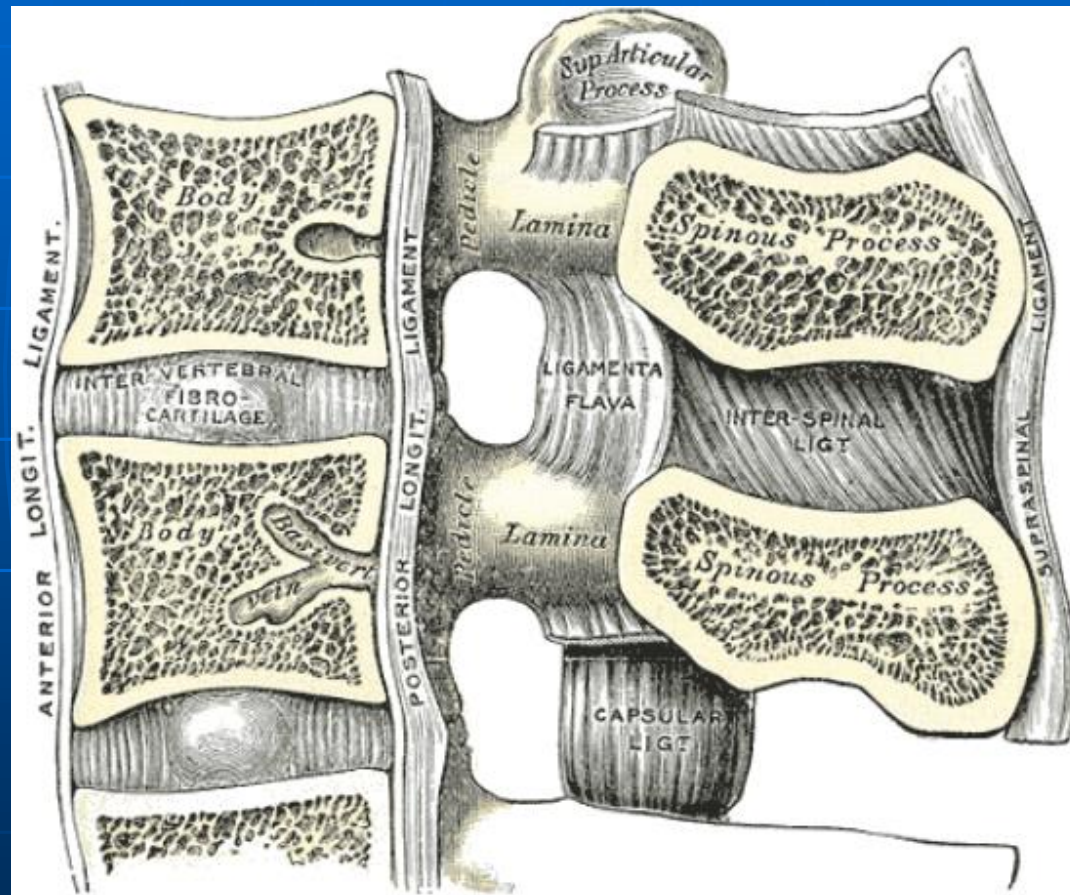


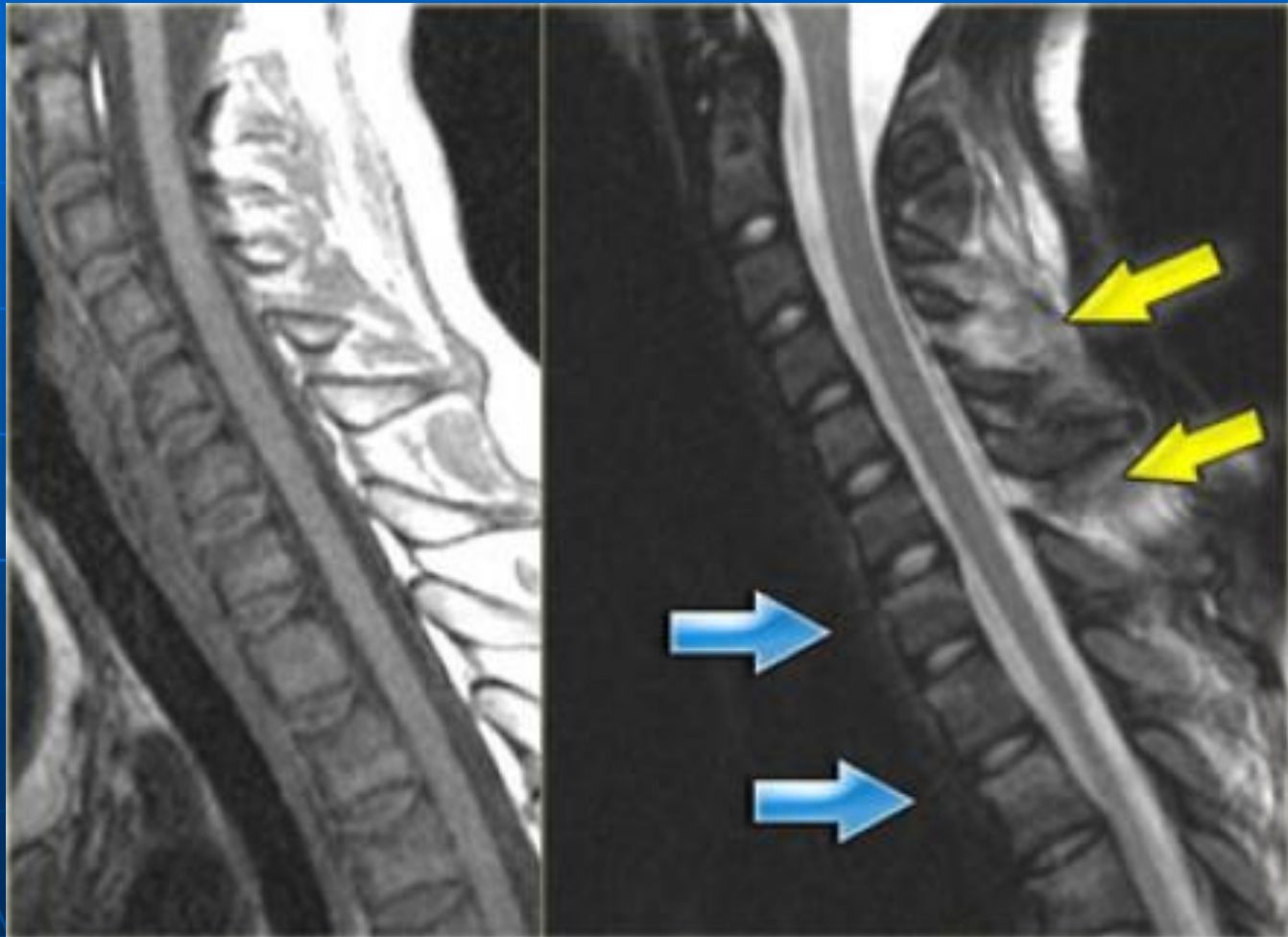
# Hyperflexion Sprain

- Hyperflexion sprain injuries are injuries to the soft tissues of the spine without fracture.
- On x-rays this can only be suspected when there is angulation or translation  
MR will demonstrate subtle injuries to the soft tissues.
- In this patient we can conclude that there was mild hyperflexion strain and we do not know if a special treatment is required, since these were isolated MR-findings without evidence of fracture or abnormal positioning.
- There is controversy regarding the meaning of soft tissue abnormalities detected only on MRI.
- Signal changes do not necessarily equate with structural failure.

# Ligamentous Disruption on MRI



# Strain without fracture



# Hyperflexion sprain

- Severe soft tissue injury of the posterior paraspinal structures, especially at the C5-6 level, where the interspinous ligament and the ligamentum flavum is ruptured
- Disruption of the C5-6 disc with migration behind C5
- Large amount of spinal cord edema





# Same patient (occluded vert)

