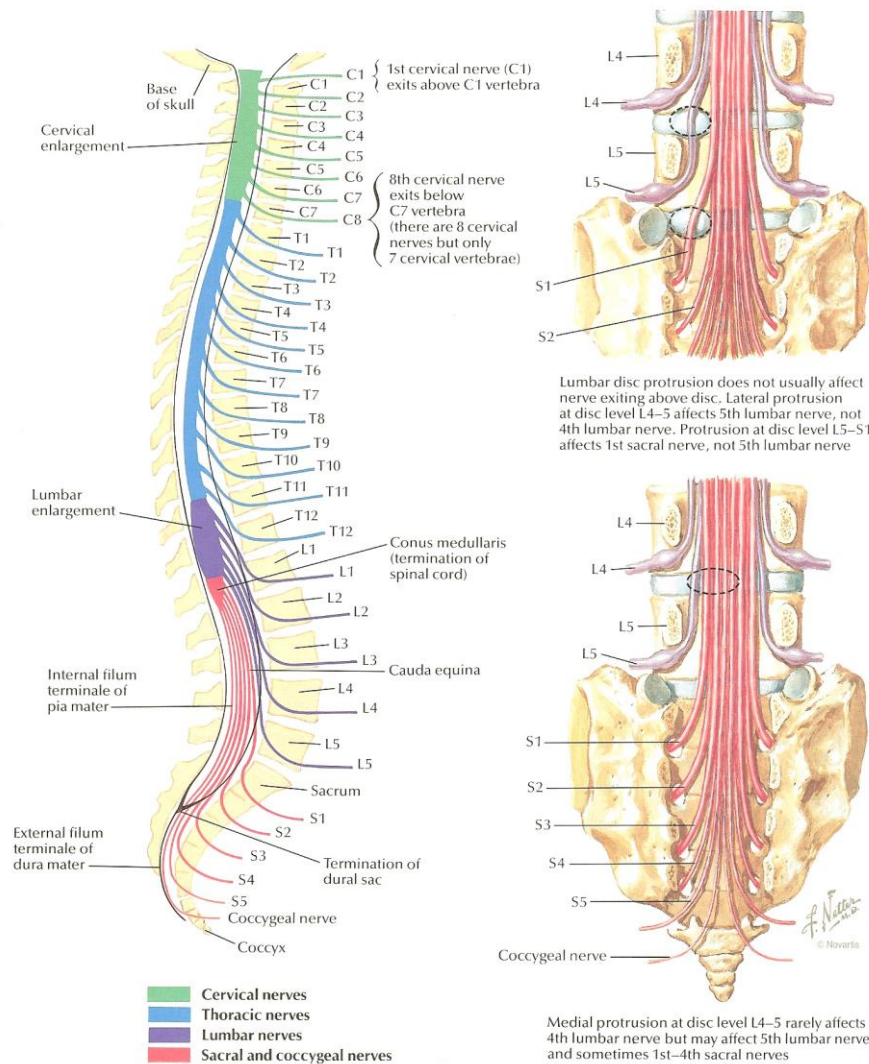
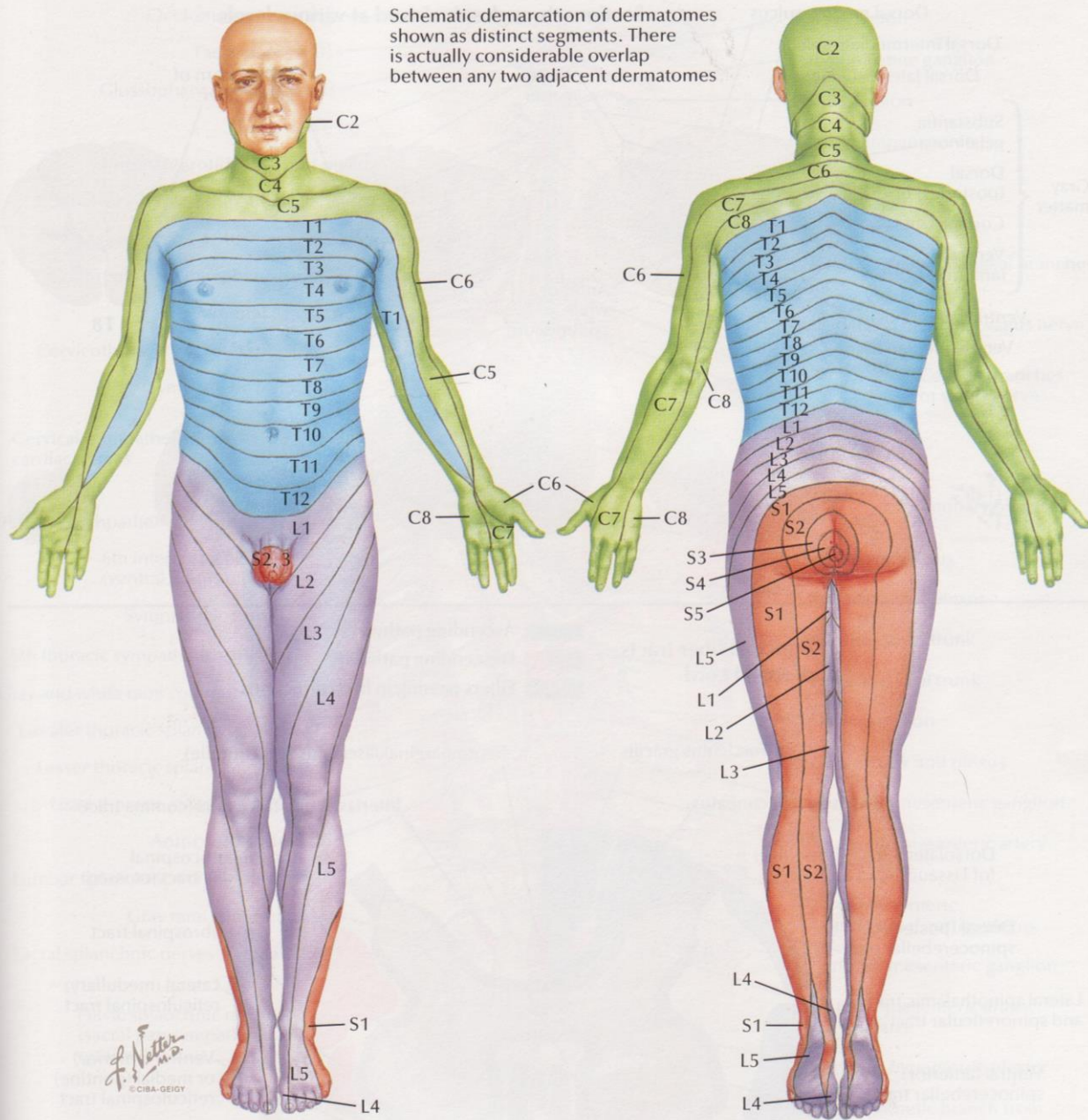


Nerve Roots

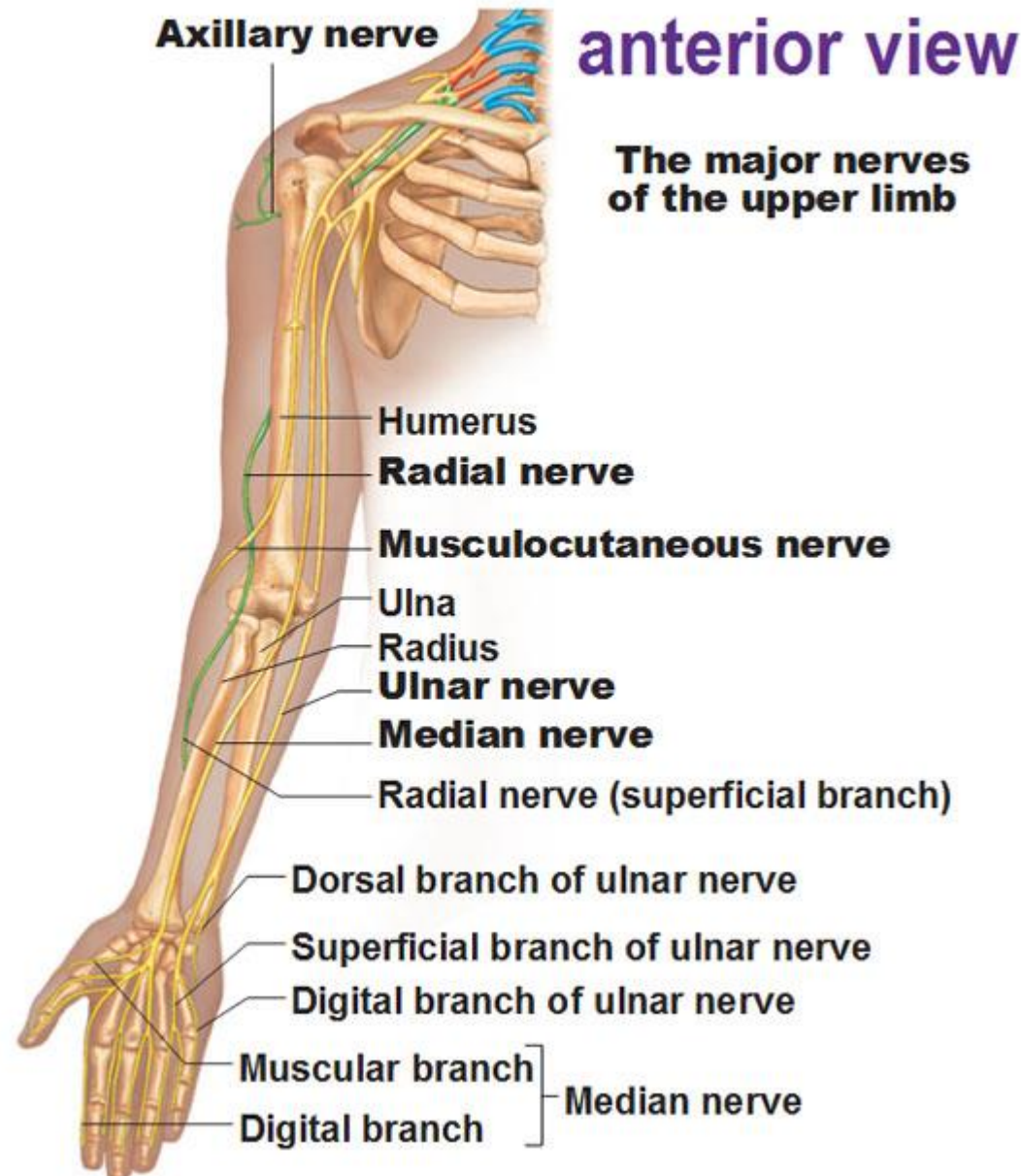
Relation of Spinal Nerve Roots to Vertebrae



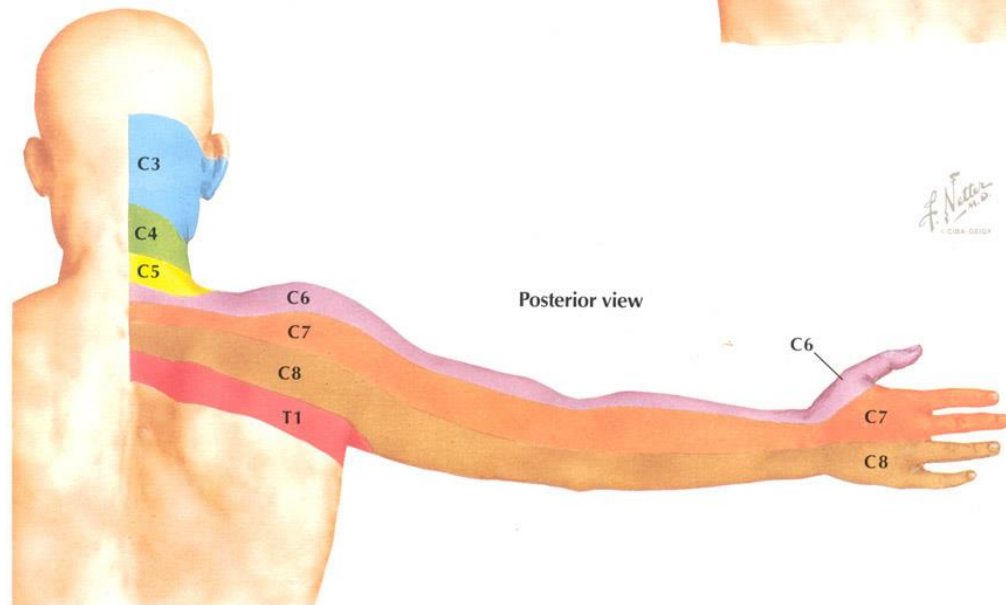
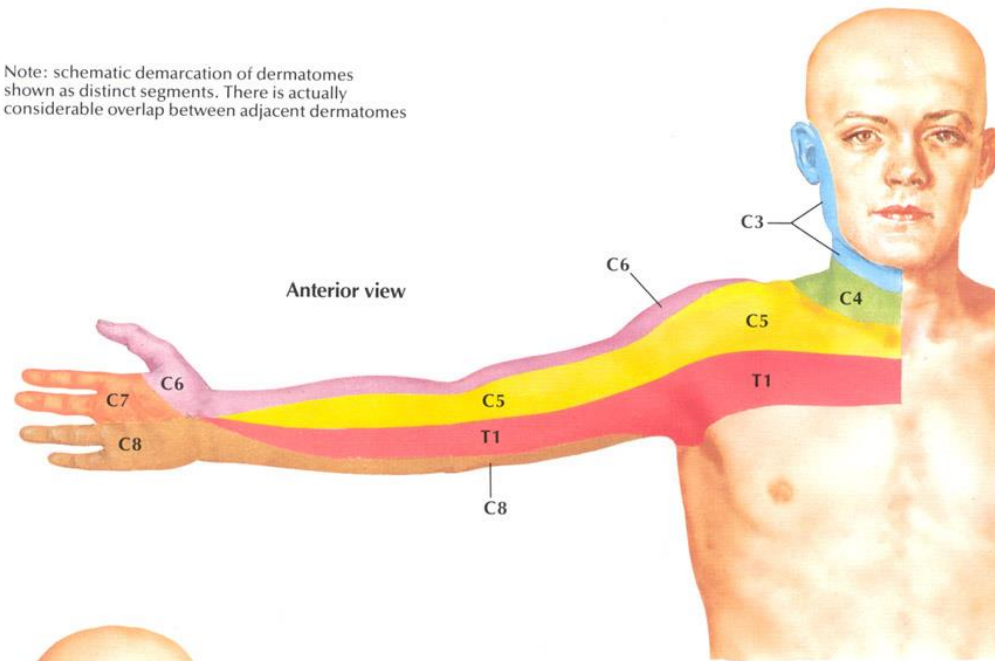
Schematic demarcation of dermatomes shown as distinct segments. There is actually considerable overlap between any two adjacent dermatomes



Nerves of the Upper Limb



Note: schematic demarcation of dermatomes shown as distinct segments. There is actually considerable overlap between adjacent dermatomes



BRANCHES OF BRACHIAL PLEXUS PROVIDE SENSORY INNERVATION TO SKIN OF ARM AND HAND

