

Nerve Sheath Tumors

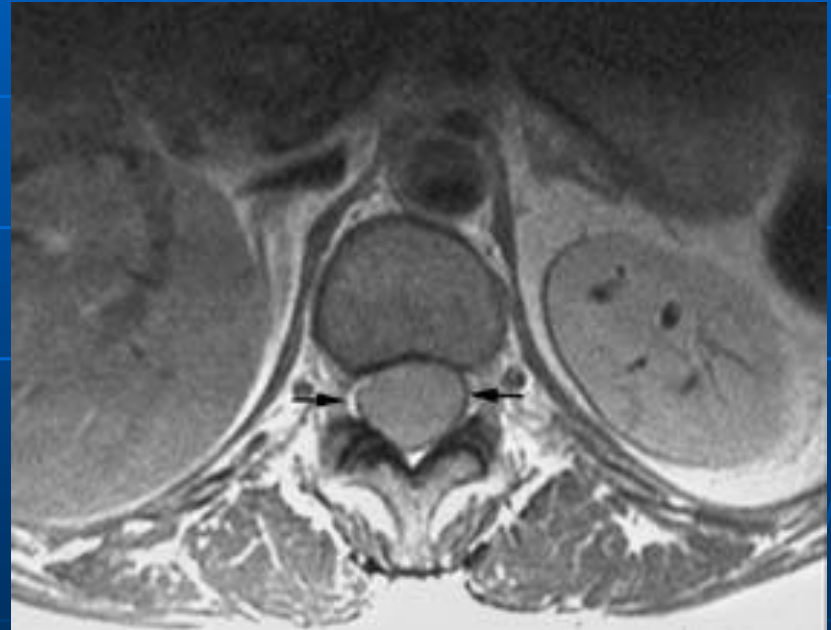
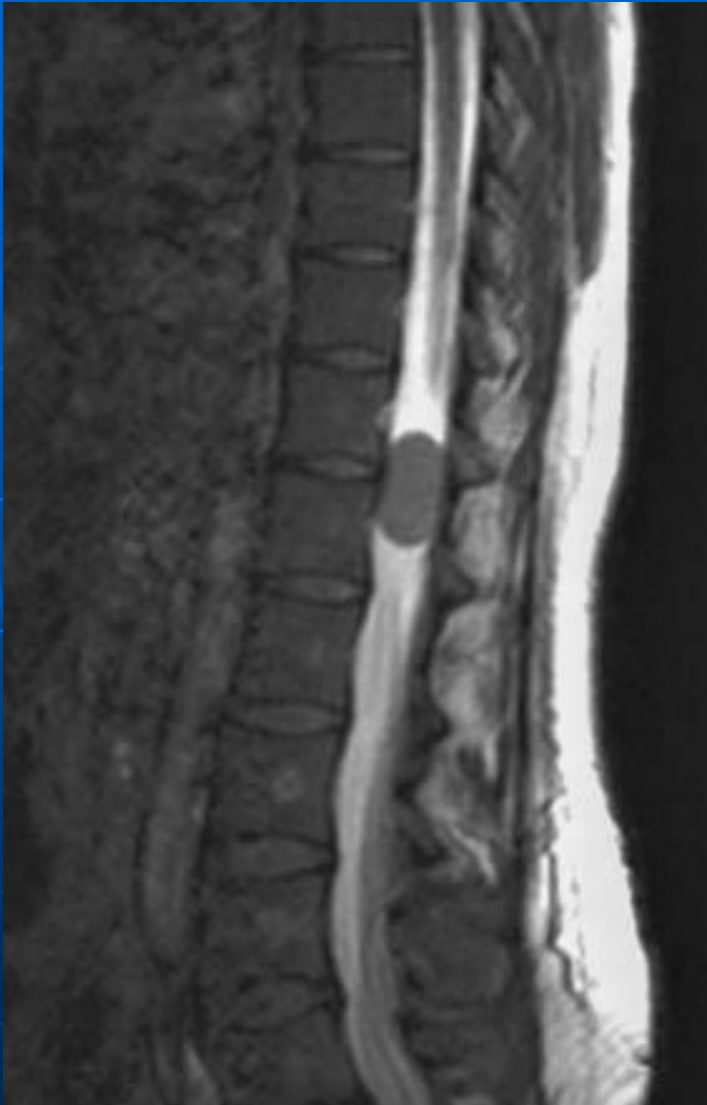
- About 25-30% of all spinal tumors
 - Schwannoma (sporadic, NF 2)
 - Neurofibroma (NF 1)
 - Intradural(70%),extradural(15%),combined(15%)
 - Associated with neurofibromatosis (35-45%)
- May be multiple, esp. with NF
- May have target or lamellated appearance
- Originate from sensory nerve roots
- Lumbar > Thoracic = Cervical

Neurofibromatosis, type 2



DDX:
Meningiomatosis
Leptomeningeal
metastatic
disease.

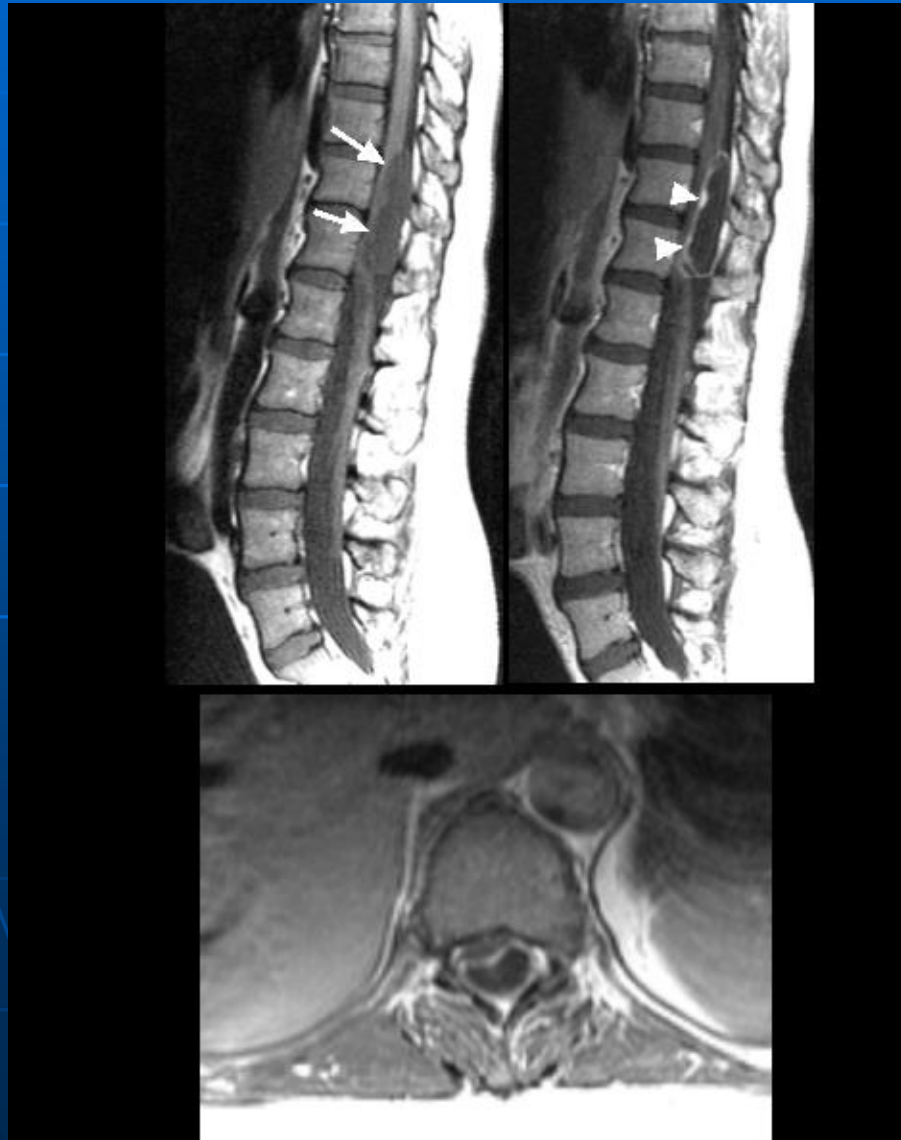
Vertebral schwannoma



Neurinoma (schwannoma) of cauda



Cystic schwannoma



DDX:
infected cyst
epidermoid

von Recklinghausen neurofibromatosis (NF-I)



multiplicity of lesions with neural foraminal enlargement is highly characteristic of NF-1

Multiple foraminal masses could also be seen with metastatic disease and hypertrophic interstitial polyneuropathy.