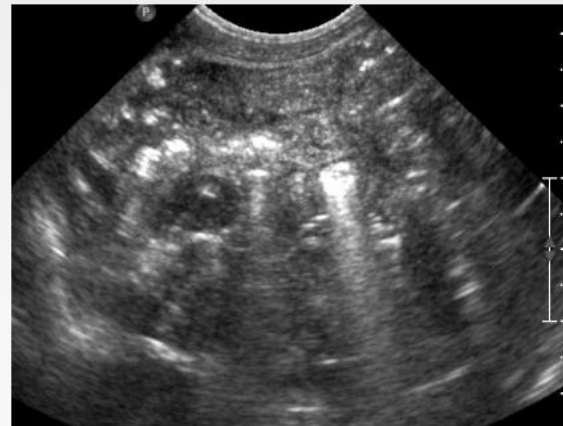
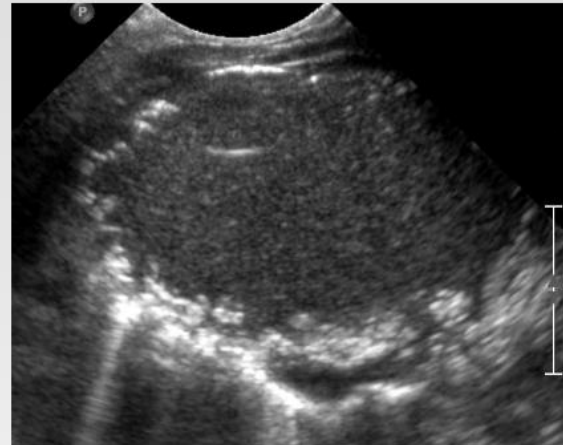


Meconium peritonitis

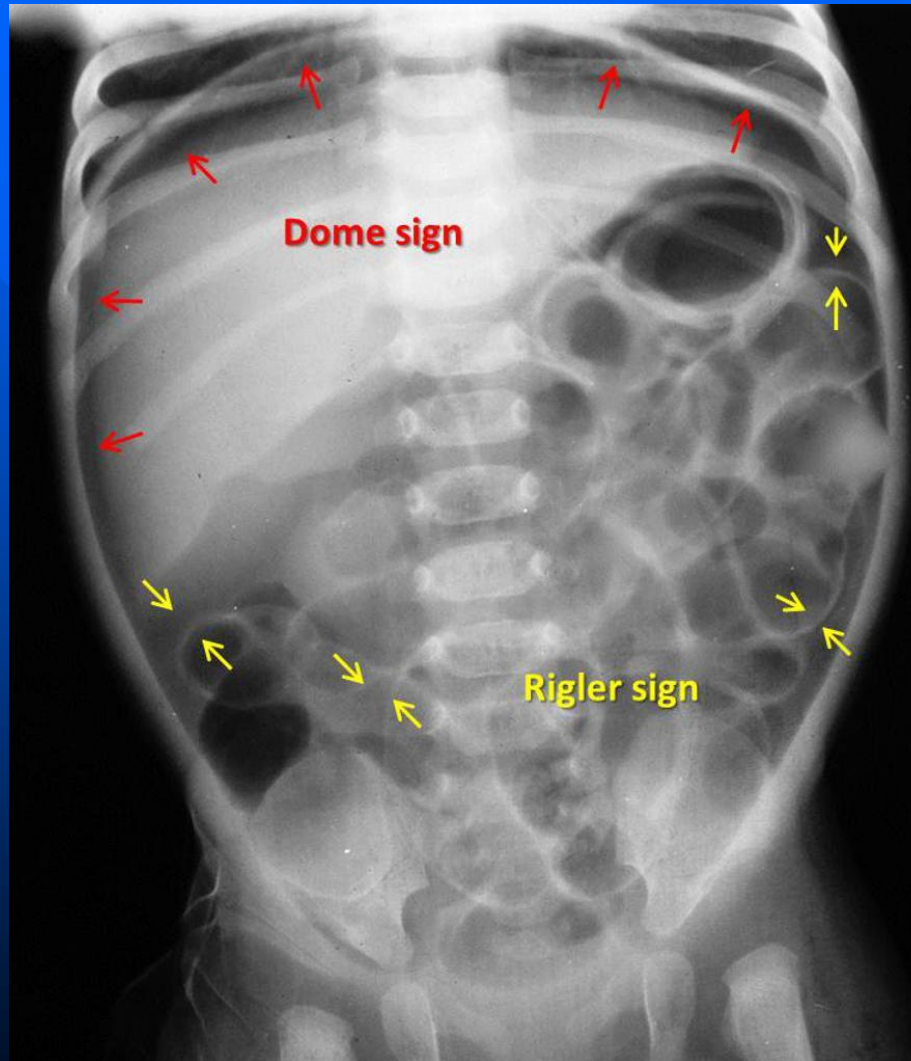
Newborn with distended abdomen



Meconium peritonitis



Rigler (double wall sign)



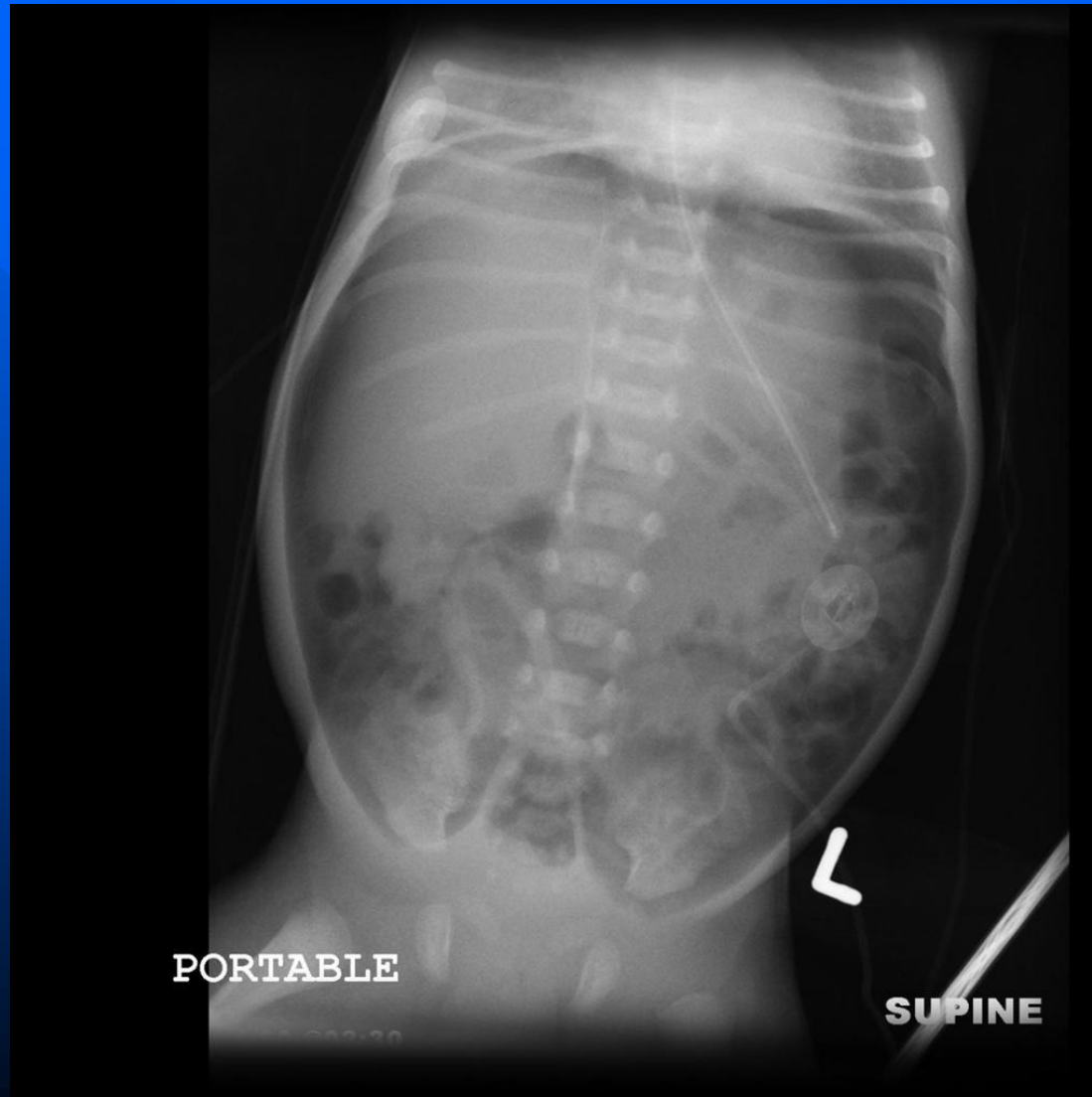
Football sign (pneumoperitoneum)

6) Falciform Ligament Sign



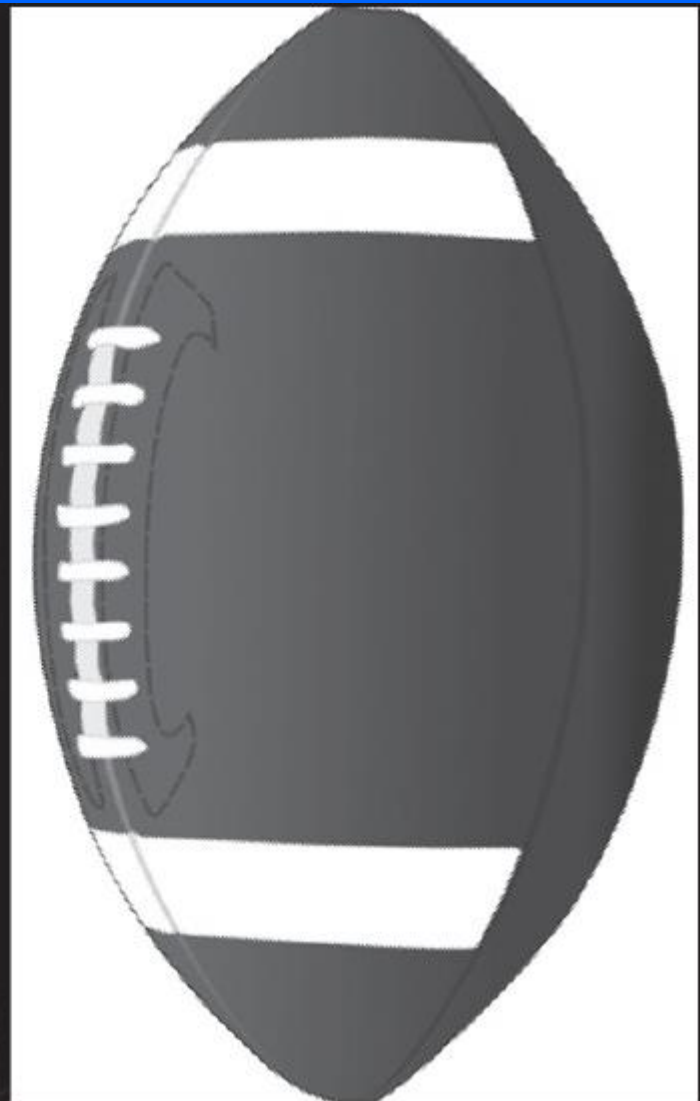
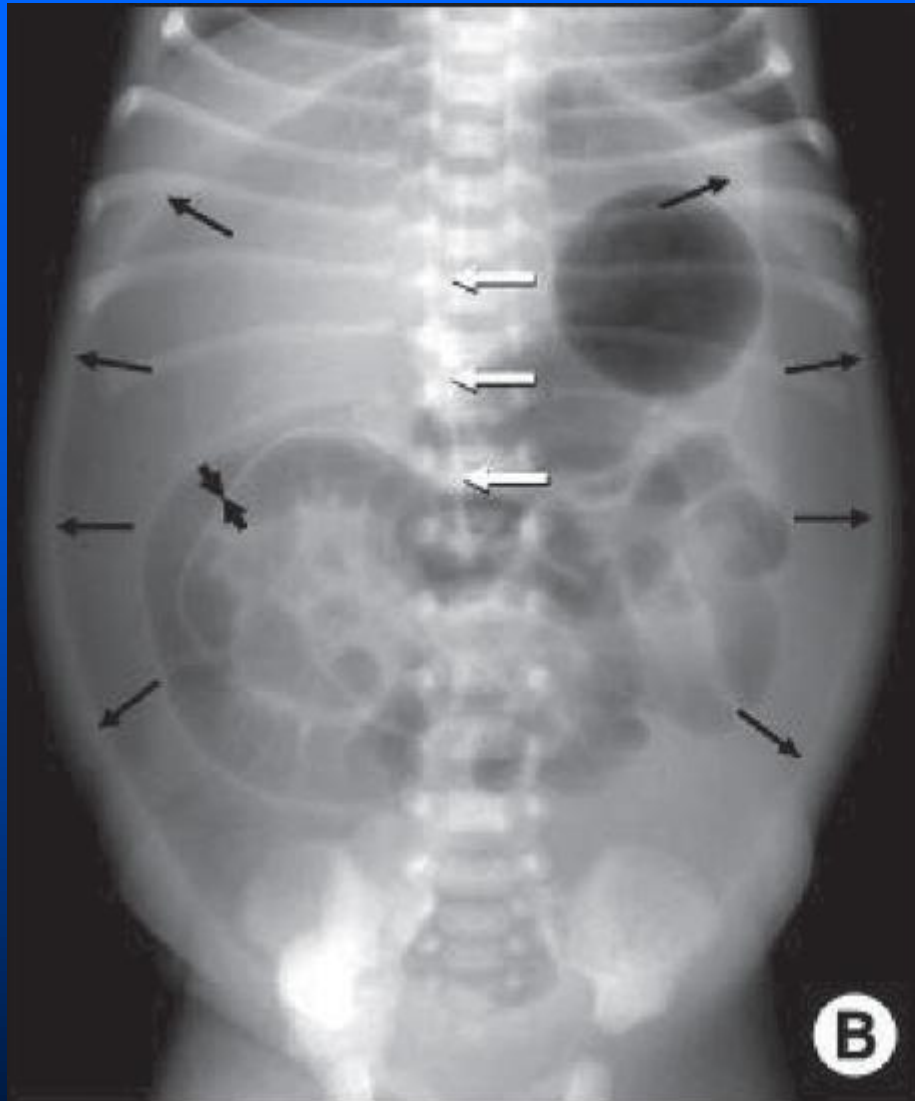
- Supine
- Falciform ligament
 - connects the anterior abdominal wall to the liver
 - extends inferiorly beyond the liver → becomes round ligament
 - becomes **outlined with air** in a patient with free abdominal gas

Football sign





trSurg_2015_12_3_161_1701



12) The Triangle Sign



- small triangles of free gas positioned between the large bowel and the flank