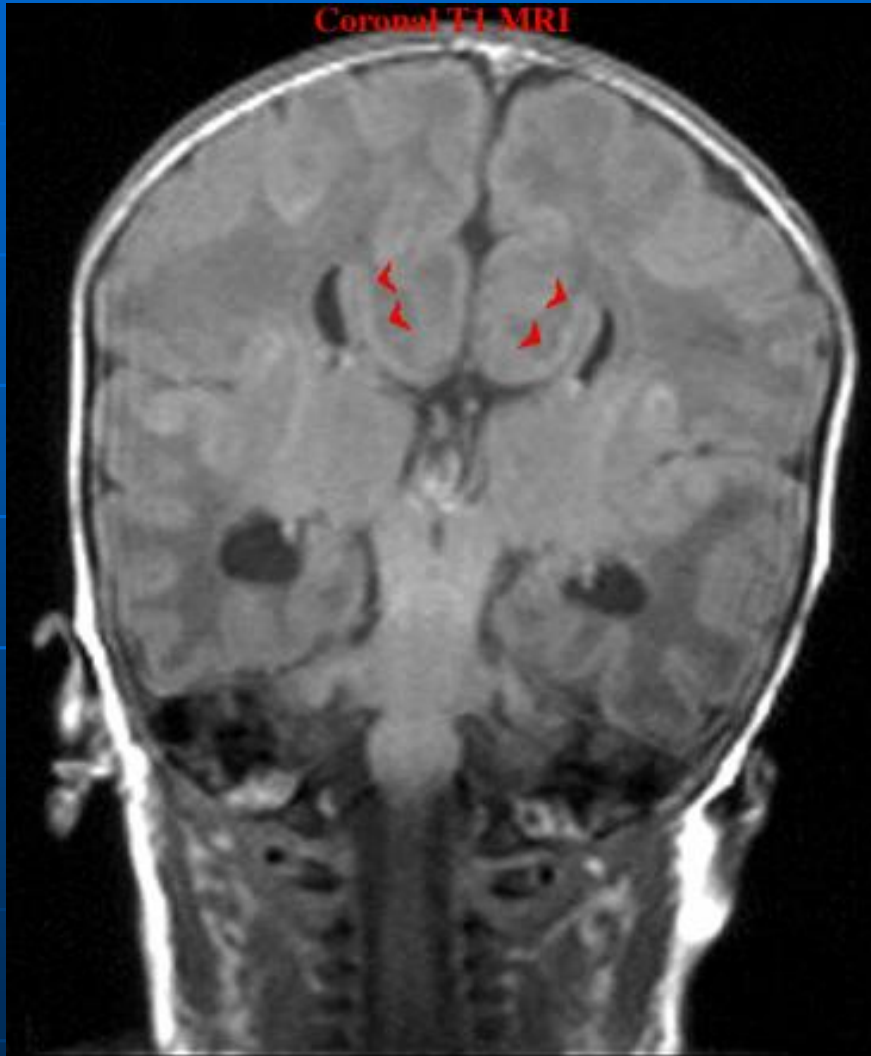


# Callosal Dysgenesis



- *Spectrum associated with other CNS anomalies in 50% of the cases*
- *Associated CNS anomalies such as the Dandy-Walker malformation, Chiari malformation, encephalocele, holoprosencephaly, and intracranial lipoma frequently coincide.*

Bull horn lateral ventricles

# *Callosal Dysgenesis*

